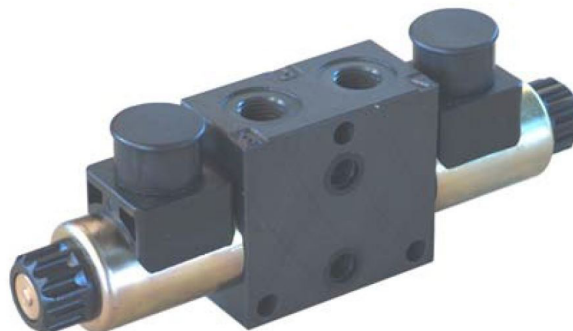


## FEATURES

- 1-8 valves in a stack
- Available with 12v or 24v coils
- Use with a 3030-HDF or 3030-VDF to mount onto Boss hydraulic power unit.
- Can be used a standalone valve stack



## SPECIFICATIONS

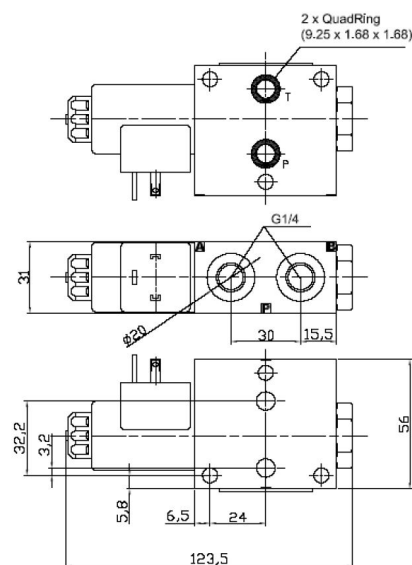
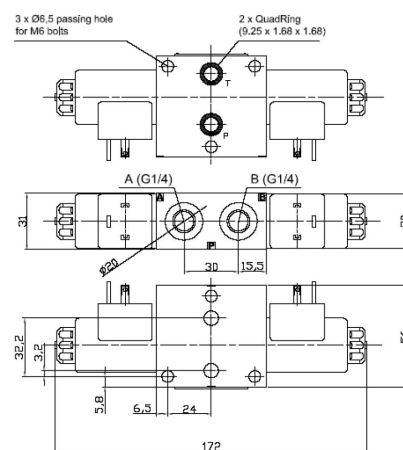
Nominal Flow Rate	20 L/min
Max Flow Rate	25 L/min
Max. Nominal Pressure (P,A,B)	250 Bar
Max Rec. Pressure (T)	200 Bar
13mm Coil	

PART NO.	SPOOL & INTERMEDIATE POSITION	VALVE TYPE
HDF-ES-0C-0000/10		4W3P
HDF-ES-1C-0000/10		4W3P
HDF-ES-3C-0000/10		4W3P
HDF-ES-4C-0000/10		4W3P

- HDF models require a closing end plate part number PD1-03.

PART NO.	SPOOL & INTERMEDIATE POSITION	VALVE TYPE
HDFC-ES-0C-0000/10		4W3P
HDFC-ES-1C-0000/10		4W3P
HDFC-ES-3C-0000/10		4W3P
HDFC-ES-4C-0000/10		4W3P

- HDFC models can be used as a standalone valve or as the closing valve on a stack
- Does not require a closing plate








## FEATURES

- Manufactured in Europe
- Available with AC or DC coils
- Variety of Sandwich valves also available.
- Valves require a 3030-HDF or 3030-VDF manifold to mount onto Boss packs



## SPECIFICATIONS

Nominal Flow Rate	50 L/min
Max Flow Rate	60 L/min
Max. Nominal Pressure (P,A,B)	320 Bar
Max Rec. Pressure (T)	210 Bar
19mm Coil Stem	

PART NO.	SPOOL & INTERMEDIATE POSITION	VALVE TYPE
HD3-ES-0C-0000/20		4W3P
HD3-ES-1C-0000/20		4W3P
HD3-ES-3C-0000/20		4W3P
HD3-ES-4C-0000/20		4W3P
HD3-ES-1LL-0000/20		4W2P

