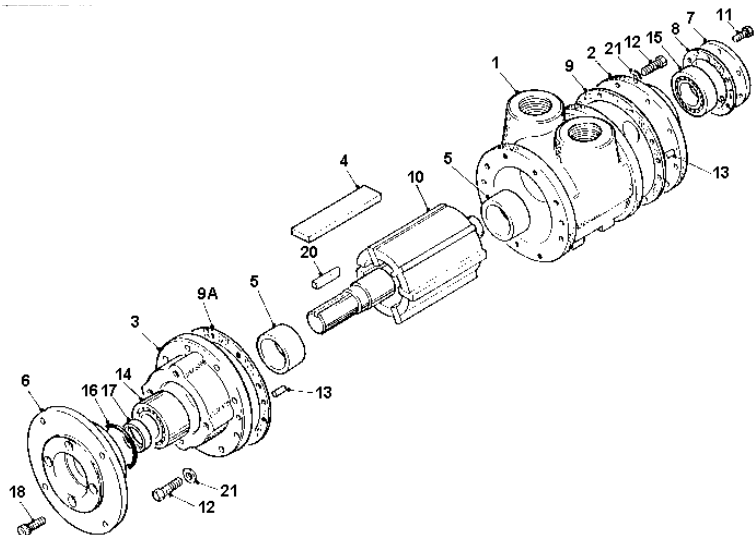
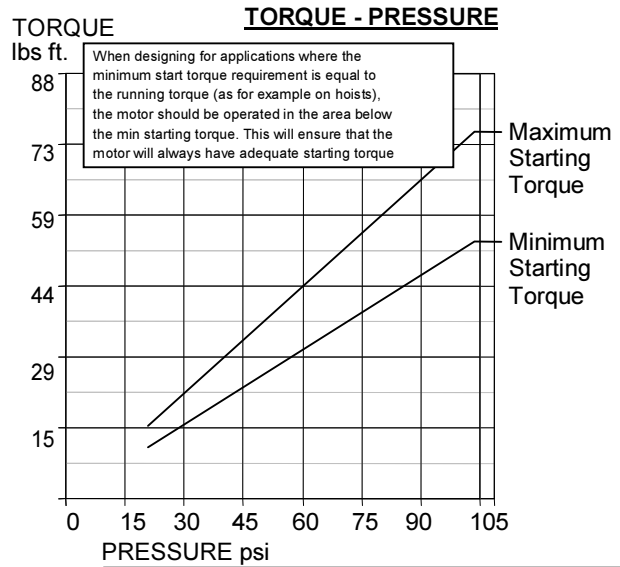
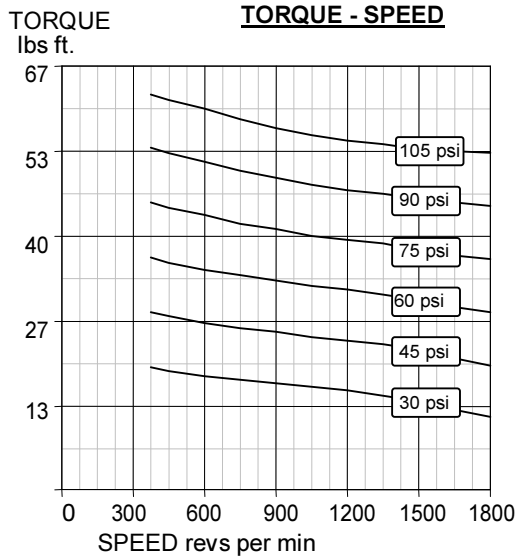


Exploded view with spare parts list

Item	Part No.	Description	Qty	Kit No.
01	712-101	Body BSP	1	
02	712-002	End Plate	1	
03	712-026	Front Cover	1	
04	-	Blades	6	712-910
05	712-006	Ejection Ring	2	
06	712-037	Flange D100	1	
07	712-108	Cover Plate	1	
08	-	Gasket	1	712-910
09	-	Gasket	2	712-910
09A-1	-	Gasket	1	712-910
09A-2	-	Gasket	1	712-910
09A-3	-	Gasket	1	712-910
10	712-923	Rotor & Shaft Assy	1	
11	-	Screw	6	
12	-	Screw	16	
13	-	Dowel	4	
14	-	Bearing	1	
15	-	Bearing	1	
16	-	O Ring	1	712-910
17	-	Oil Seal	1	712-910
18	-	Cap Screw	1	
20	-	Key	1	
21	-	Washer	1	
	712-910	V12 Seal Kit	1	
		Silencer 2" BSP	1	

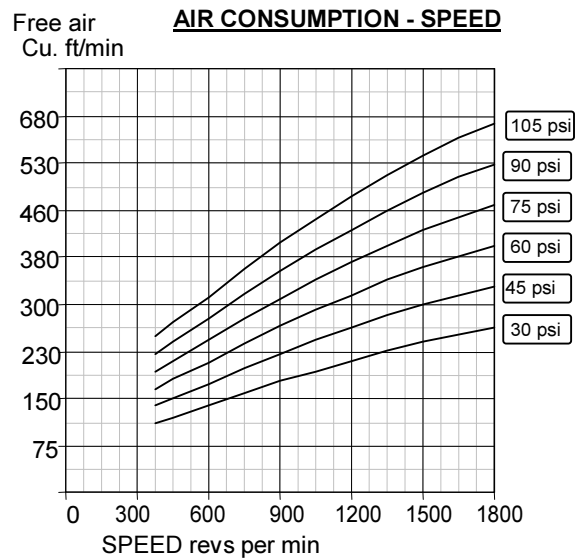
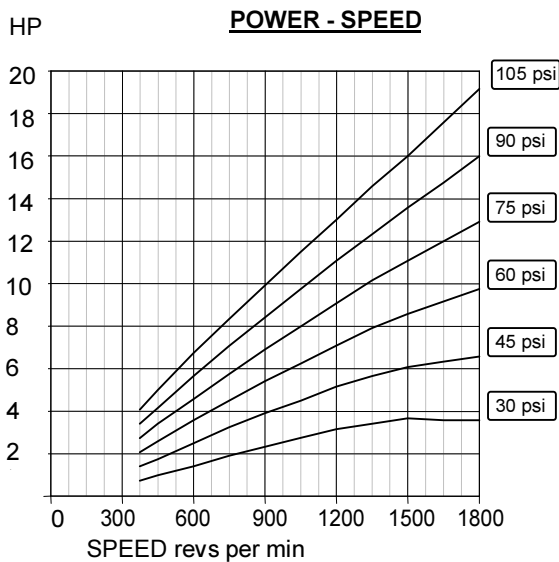




When designing for applications where the minimum start torque requirement is equal to the running torque (as for example on hoists), the motor should be operated in the area below the min starting torque. This will ensure that the motor will always have adequate starting torque

Maximum Starting Torque
Minimum Starting Torque

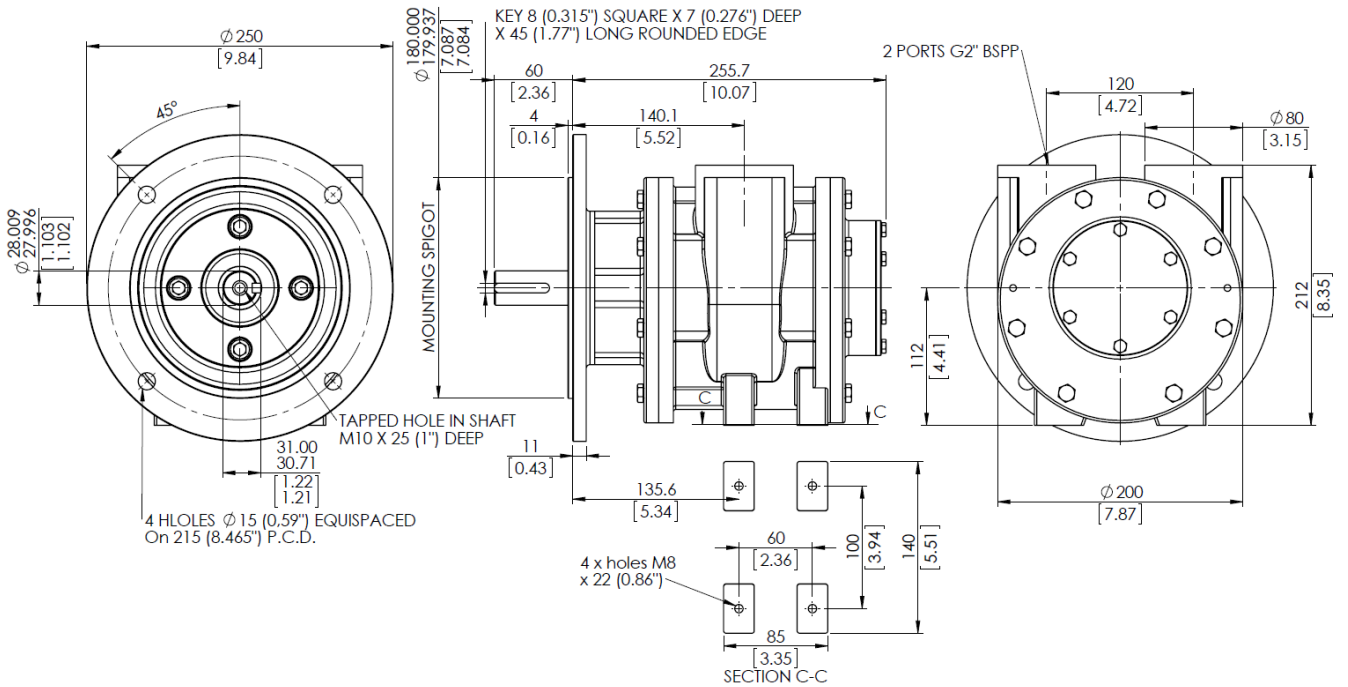
A pressure regulator should be used to control the air pressure to the motor, to limit the maximum output torque applied to the driven assembly.



Muffler supplied with motor.
 Motor is reversible.
 Attitude: The motor can be operated in all positions.
 Maximum temperature -20°C to +80°C (-4°F to +176°F).

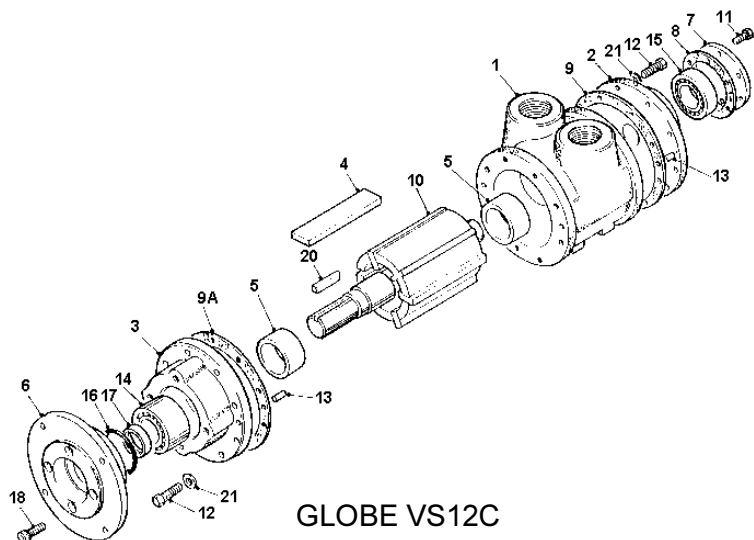
AIRLINE FILTRATION AND LUBRICATION
 Use 64 micron filtration or better. Choose a lubricator suitable for the flow required. Prior to initial start-up, inject oil into the inlet port.
 Lubricator drop rate 12-14 drops/minute continuous operation.
 Lubricator drop rate 18-20 drops/minute intermittent operation.

Maximum continuous speed 1800 rpm



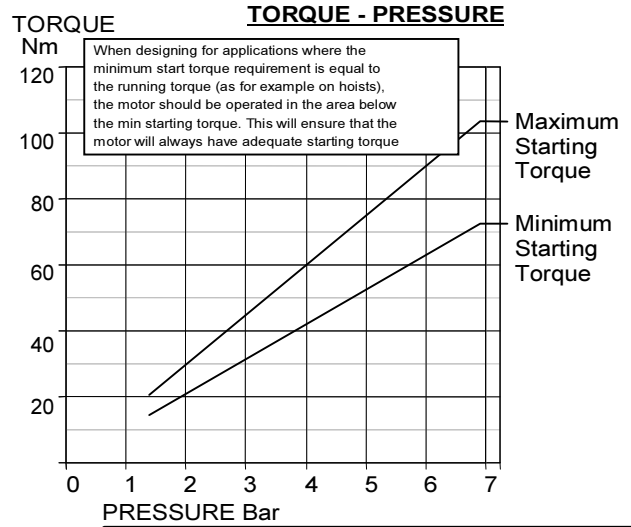
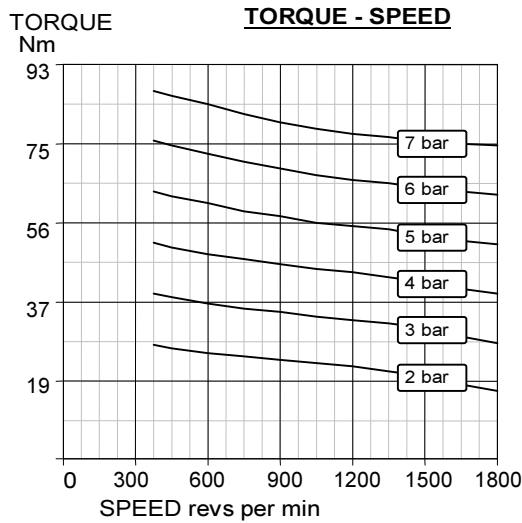
Exploded view with spare parts list

Item	Part No.	Description	Qty	Kit No.
01	712-101	Body BSP	1	
02	712-002	End Plate	1	
03	712-026	Front Cover	1	
04	-	Blades	6	712-910
05	712-006	Ejection Ring	2	
06	712-037	Flange D100	1	
07	712-008	Cover Plate	1	
08	-	Gasket	1	712-910
09	-	Gasket	2	712-910
09A-1	-	Gasket	1	712-910
09A-2	-	Gasket	1	712-910
09A-3	-	Gasket	1	712-910
10	712-923	Rotor & Shaft Assy	1	
11	-	Screw	6	
12	-	Screw	16	
13	-	Dowel	4	
14	-	Bearing	1	
15	-	Bearing	1	
16	-	O Ring	1	712-910
17	-	Oil Seal	1	712-910
18	-	Cap Screw	1	
20	-	Key	1	
21	-	Washer	1	
	712-910	V12 Seal Kit	1	
		Silencer 2" BSP	1	



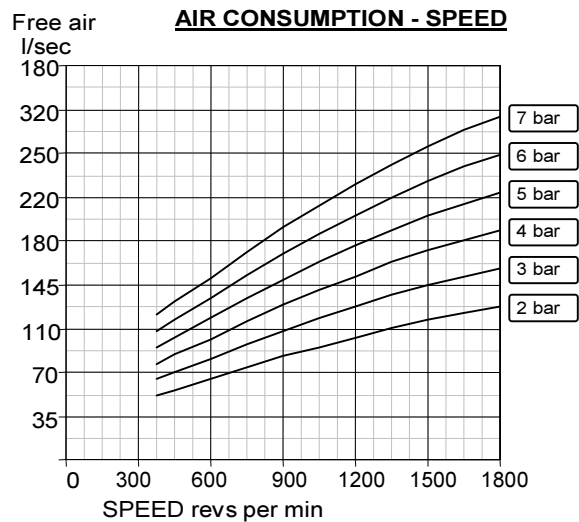
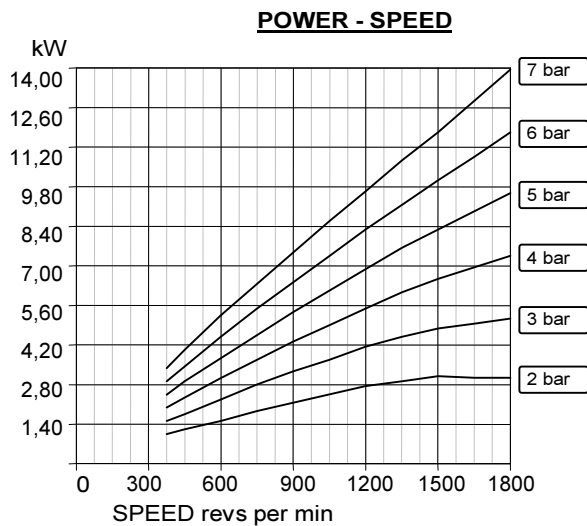
GLOBE VS12C





When designing for applications where the minimum start torque requirement is equal to the running torque (as for example on hoists), the motor should be operated in the area below the min starting torque. This will ensure that the motor will always have adequate starting torque

A pressure regulator should be used to control the air pressure to the motor, to limit the maximum output torque applied to the driven assembly.



Muffler supplied with motor.
Motor is reversible.

Attitude: The motor can be operated in all positions.
Maximum temperature -20°C to +80°C (-4°F to +176°F).

AIRLINE FILTRATION AND LUBRICATION

Use 64 micron filtration or better. Choose a lubricator suitable for the flow required. Prior to initial start-up, inject oil into the inlet port.
Lubricator drop rate 12-14 drops/minute continuous operation.
Lubricator drop rate 18-20 drops/minute intermittent operation.

Maximum continuous speed 1800 rpm

