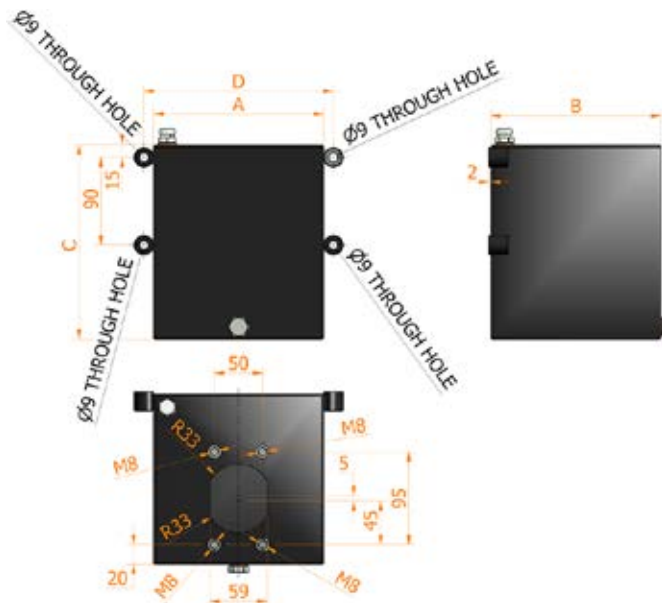
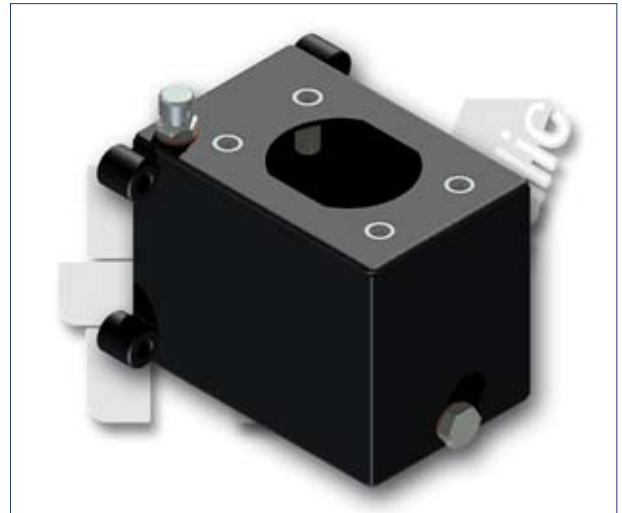


STEEL OIL TANK

painted steel oil tank for hand pumps



Specifications:

- Standard colour black

CAPACITY litri	A mm	B mm	C mm	D mm	MASS KG	SUCTION PIPE	CODE
3	100	150	255	120	3,700	Ø10x180 mm	S3AC-R
5	175	175	200	195	5,300	Ø10x156 mm	S5AC-R
7	175	175	275	195	6,600	Ø10x215 mm	S7AC-R

LEVERS FOR HAND PUMPS

straight lever
white zincate



Specifications:

- Hand grip colour **black**
- Standard lever \varnothing 27 x 600

LEVER	A mm	B mm	C mm	S mm	L mm	WEIGHT KG	LEVER FOR HAND PUMP
L 27x600 zb-d	-	-	-	27	600	0,90	PM PMD PMDVB PMO PMP PMSE 20-30-40 PM2V 5-80