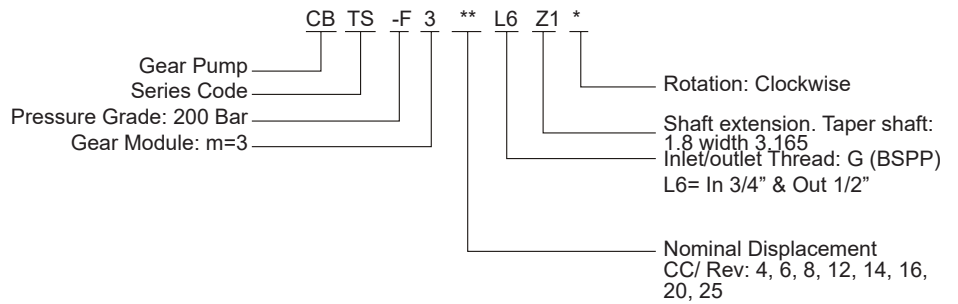


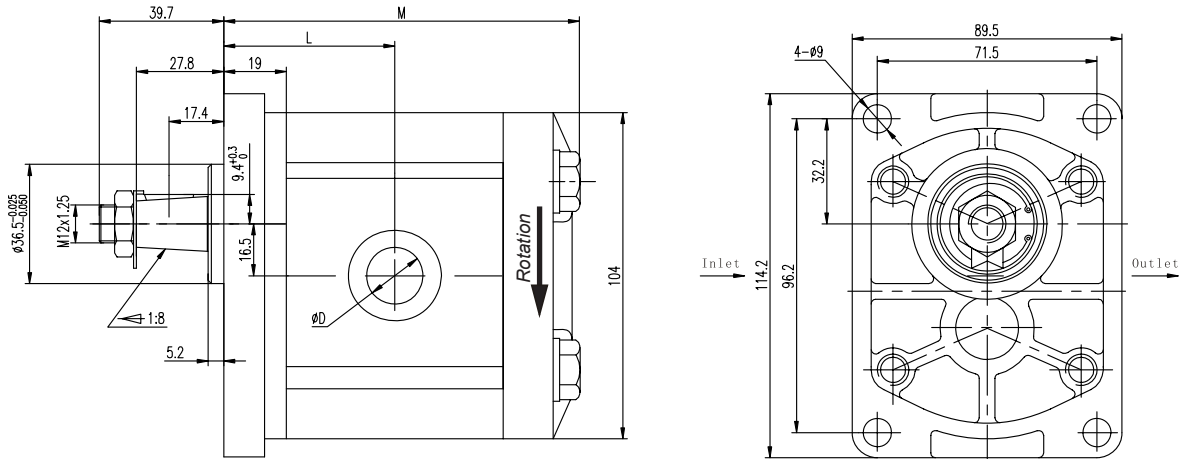
GROUP 2 GEAR PUMPS EUROPEAN STANDARD
 DIN Mount 1:8 Tapered Shaft, Clockwise Rotation, BSPP Ports



HYDRAULIC



DIMENSIONS



MODEL	CC/ Rev	PRESSURE (Bar)		SPEED (r/min)		L (mm)	M (mm)	Ø D Inlet	Ø D Outlet
		Rated	Max.	Rated	Max				
CBTS-F304L6Z1	4	200	250	2000	3000	45	93	1/2"	1/2"
CBTS-F306L6Z1	6	200	250	2000	3000	46	95	1/2"	1/2"
CBTS-F308L6Z1	8	200	250	2000	3000	48	98	3/4"	1/2"
CBTS-F310L6Z1	10	200	250	2000	3000	49	101	3/4"	1/2"
CBTS-F312L6Z1	12	200	250	2000	3000	51	105	3/4"	1/2"
CBTS-F314L6Z1	14	200	250	2000	3000	52	107	3/4"	1/2"
CBTS-F316L6Z1	16	200	250	2000	3000	54	111	3/4"	1/2"
CBTS-F320L6Z1	20	200	250	2000	3000	57	117	3/4"	1/2"
CBTS-F325L6Z1	25	200	250	2000	3000	61	125	3/4"	1/2"



www.pthydraulics.com.au

e: sales@pthydraulics.com.au

ph: (03) 9562 8800

f: (03) 9562 8080

a: 19 Ricketts Rd Mount Waverley, VIC, 3149