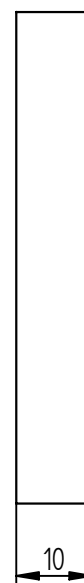
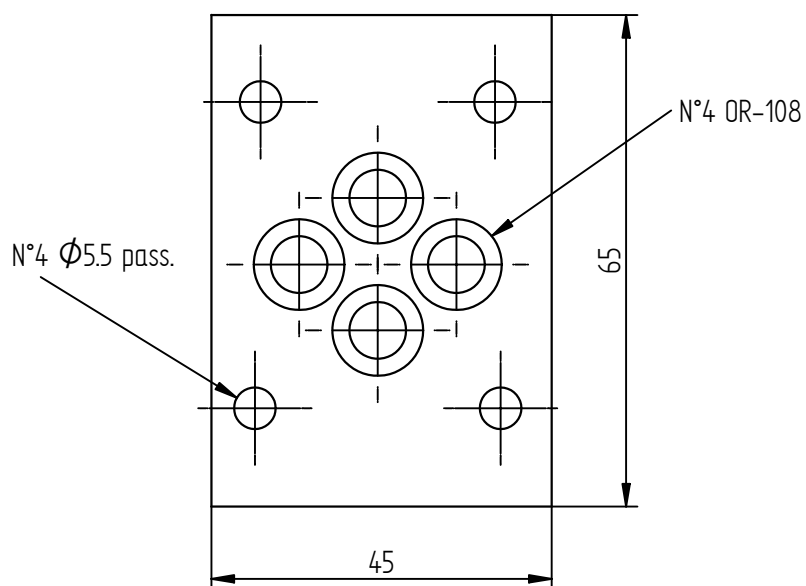
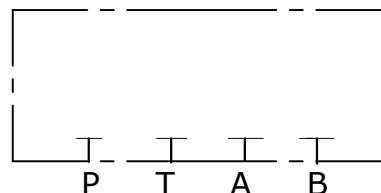
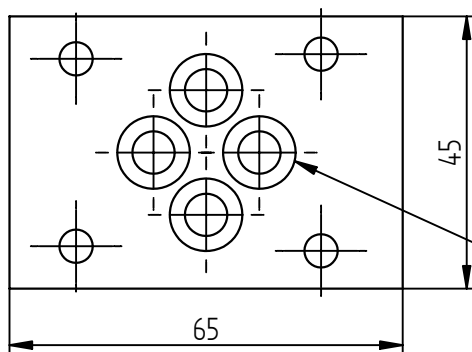
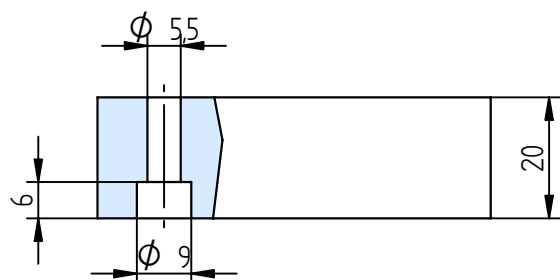
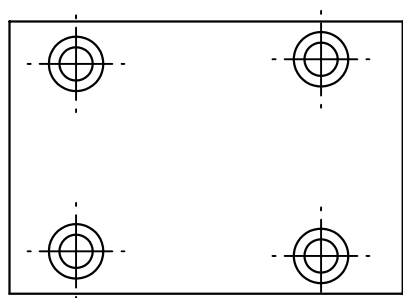
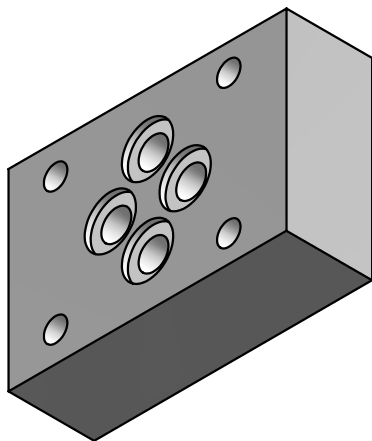


Schema idraulico
 Hydraulic diagram



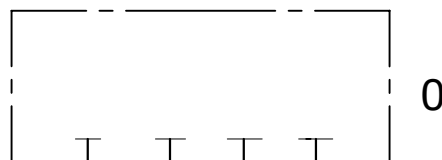
ES 06-00-10

S=STEEL
 A=ALUMINIUM

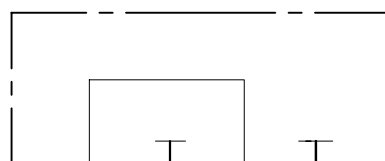


N°4 OR-108

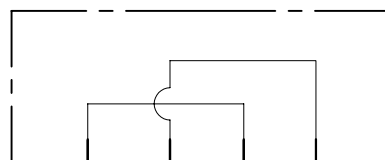
Schema idraulico
 Hydraulic diagram



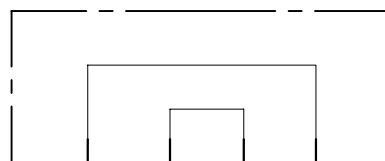
0



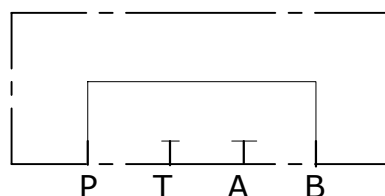
1



2



3

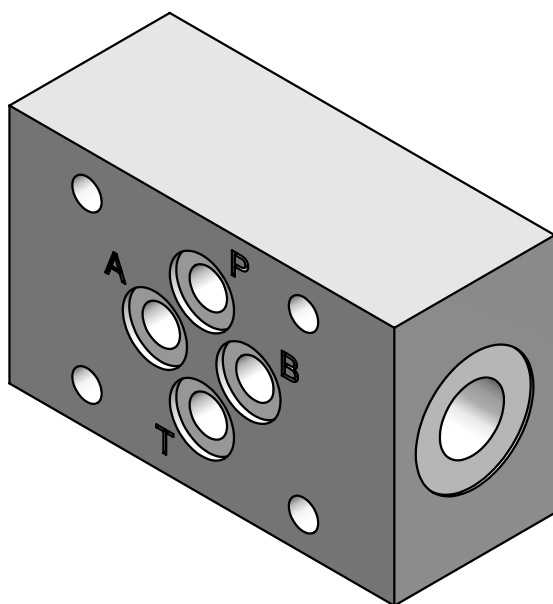


4

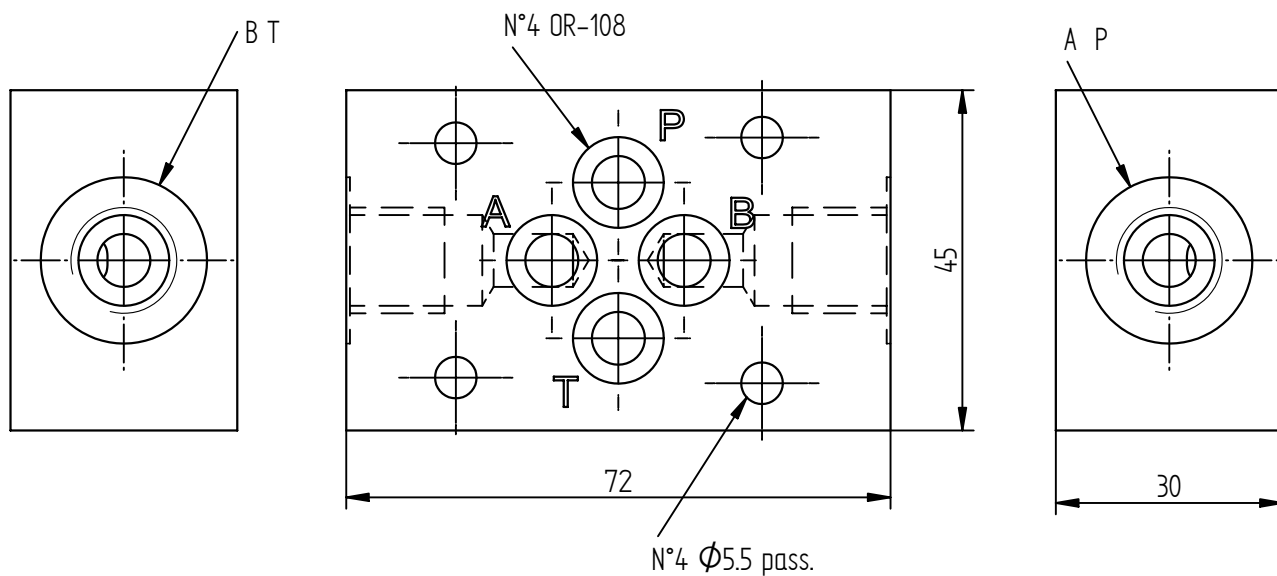
ES 06-00-20-0

S=STEEL
 A=ALUMINIUM

SEE DIAGRAMS



COD.	DIAGRAMS	
1	A+B	standard
2	A	on request
3	B	on request
4	P+T	standard
5	P	on request
6	T	on request
7	P+P	on request
8	T+T	on request

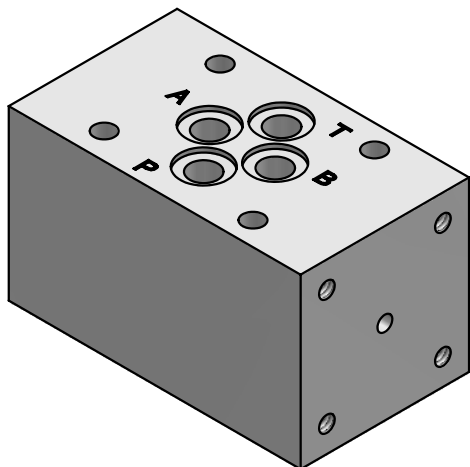


ES 06-01-14-1

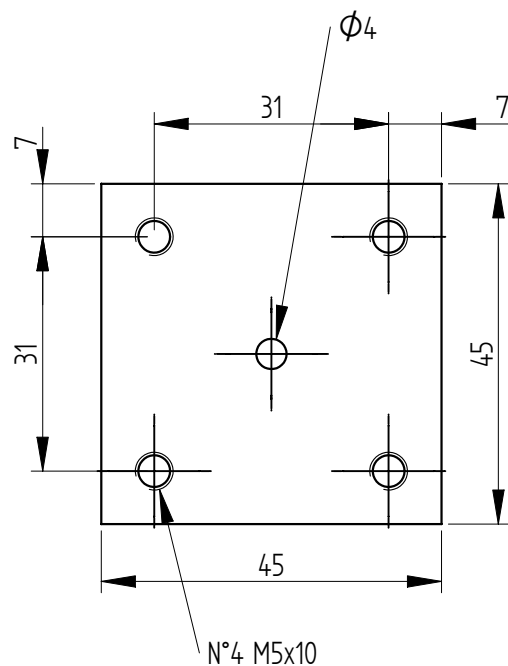
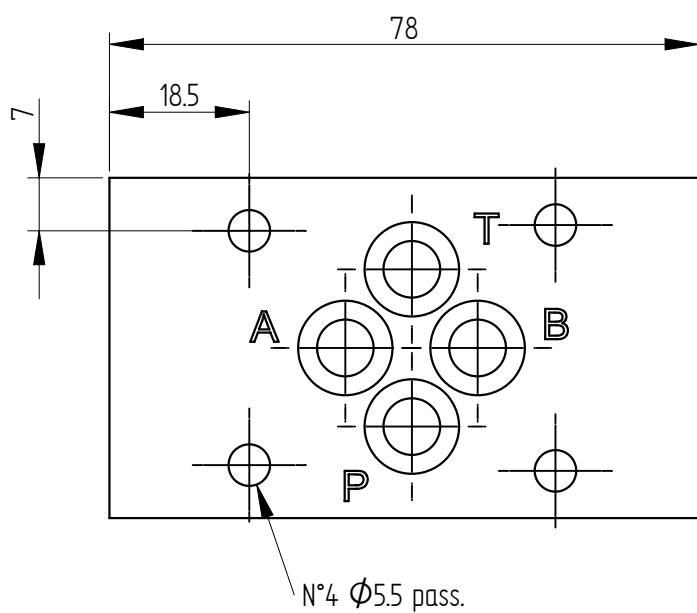
S=STEEL
 A=ALUMINIUM

SEE DIAGRAMS

14=1/4"
 38=3/8"



COD.	DIAGRAMS	
1	A+B	standard
2	A	standard
3	B	standard
4	P+T	on request
5	P	standard
6	T	on request
7	P+P	on request

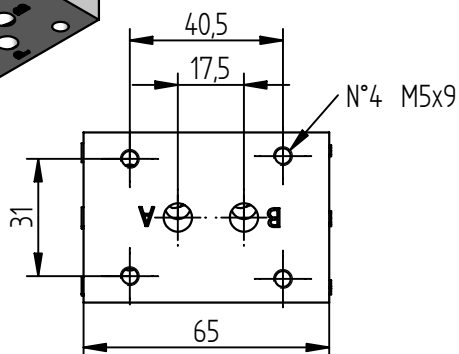
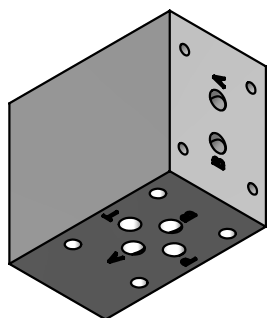


ES 610-06-1

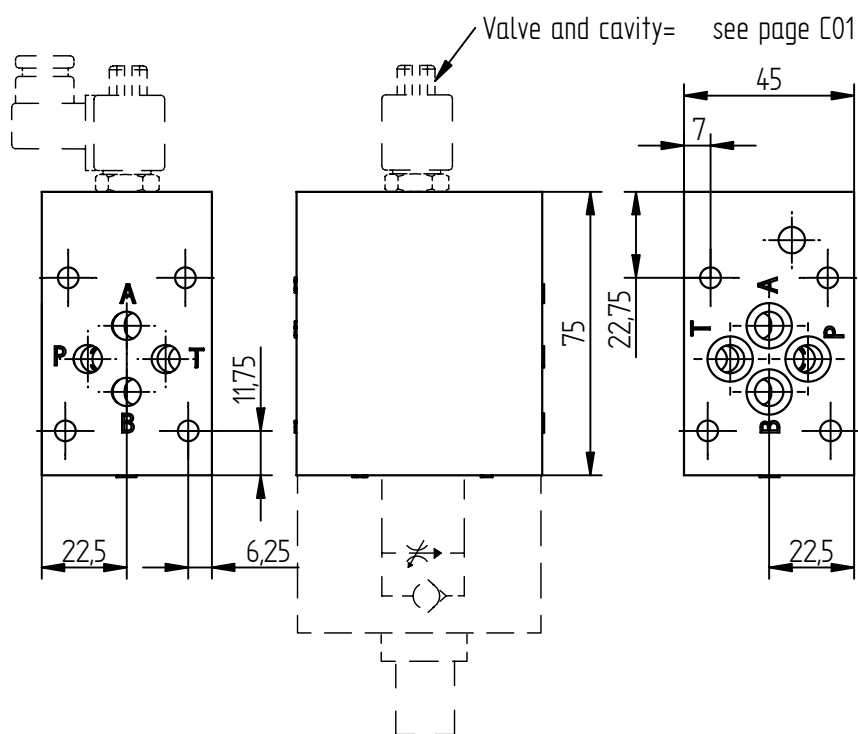
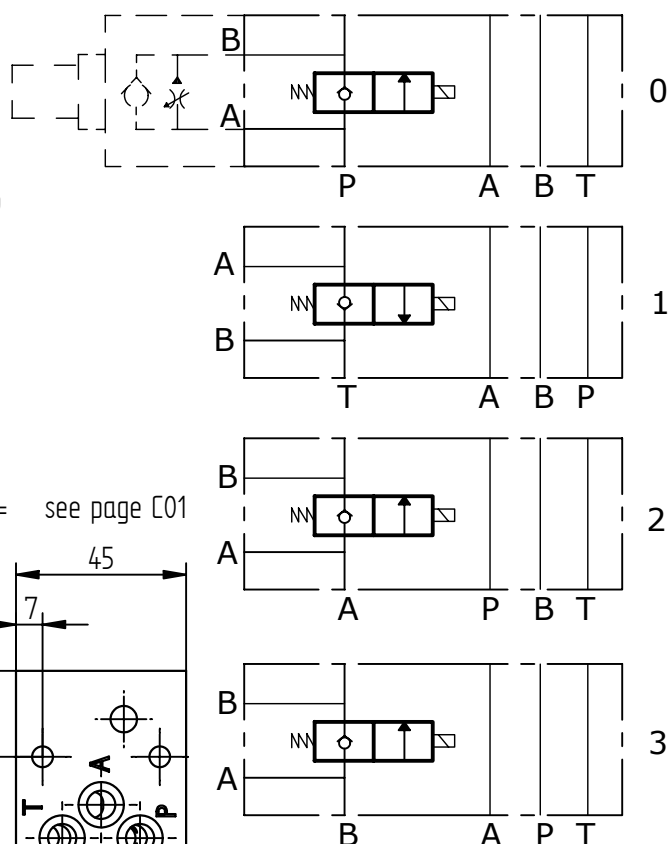
S=STEEL
 A=ALUMINIUM

SEE DIAGRAMS

ELEMENTO MODULARE CETOP 3 "RAPIDO - LENTO"
MODULAR ELEMENT CETOP 3 "FAST - SLOW"



Schema idraulico
Hydraulic diagram



ES 610-13-0

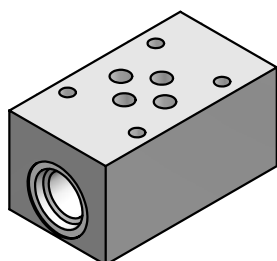
S=STEEL
A=ALUMINIUM

SEE DIAGRAMS

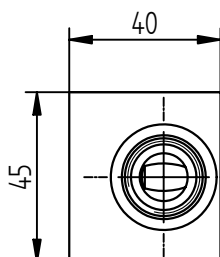
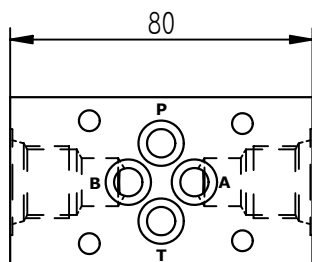
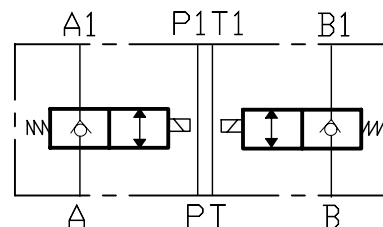
Via Nicolò Copernico 12/c-d
 29027 Casoni Di Gariga - Pordenzano (PC) Italy

www.oleodinamica2mp.it
 Tel +39 0523 523231
 Fax +39 0523 524509

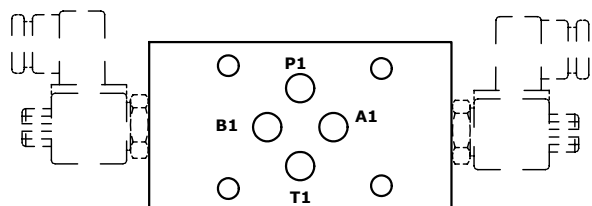
ELEMENTO MODULARE PER VALVOLA SAE08
MODULAR ELEMENT FOR SAE08 VALVES



Schema idraulico
Hydraulic symbol



Valve and cavity= see page [01
[007/2/034]



DIREZ. DI CONTROLLO	CODICE	DISPONIBILITA'
P → T (VENTING)	01	STANDARD
P → P1	02	STANDARD
A → A1	03	STANDARD
A1 → A	04	
B → B1	05	STANDARD
B1 → B	06	
A → A1 B → B1	07	STANDARD
A1 → A B1 → B	08	

ES 610-15-0

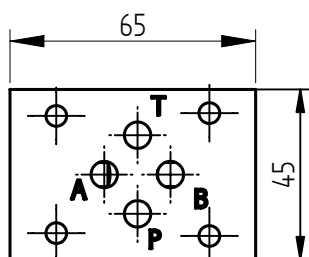
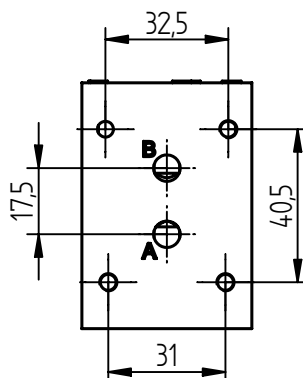
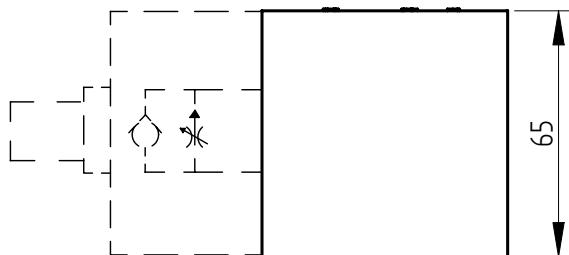
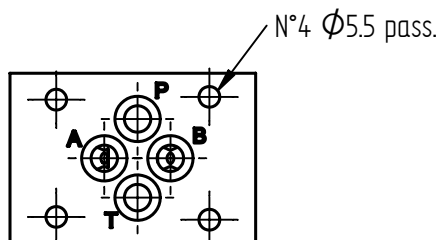
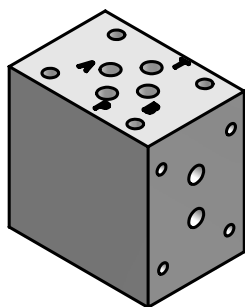
S=STEEL
A=ALUMINIUM

SEE DIAGRAMS

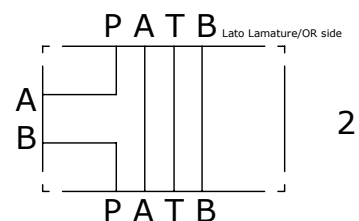
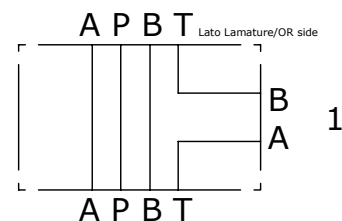
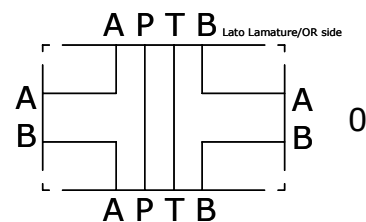
Via Nicolò Copernico 12/c-d
 29027 Casoni Di Gariga - Podenzano (PC) Italy

www.oleodinamica2mp.it
 Tel +39 0523 523231
 Fax +39 0523 524509

ELEMENTO MODULARE REGOLATORE CETOP 3
MODULAR ELEMENT FOR REGULATION CETOP 3



Schema idraulico
Hydraulic diagram



Disponibile piastrino di cortocircuito A-B ES610-17-C
 Available A-B short-circuit plate A-B ES610-17-C

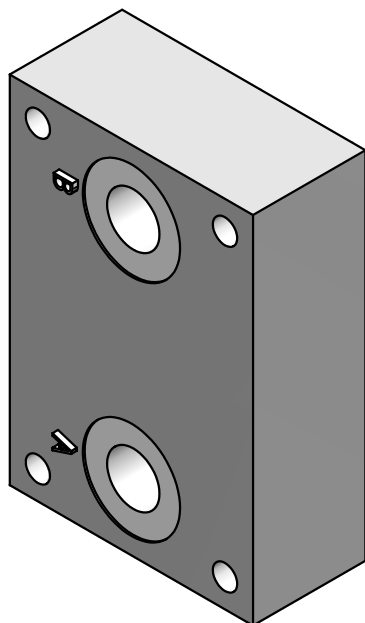
ES 610-17-0

S=STEEL
A=ALUMINIUM

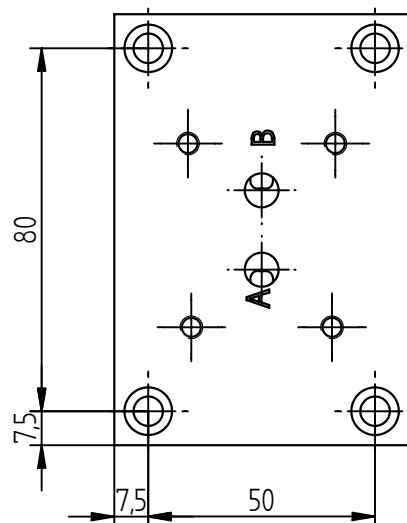
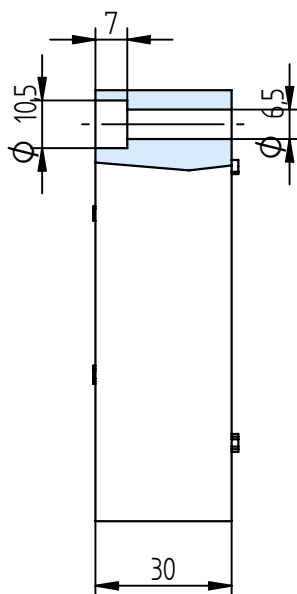
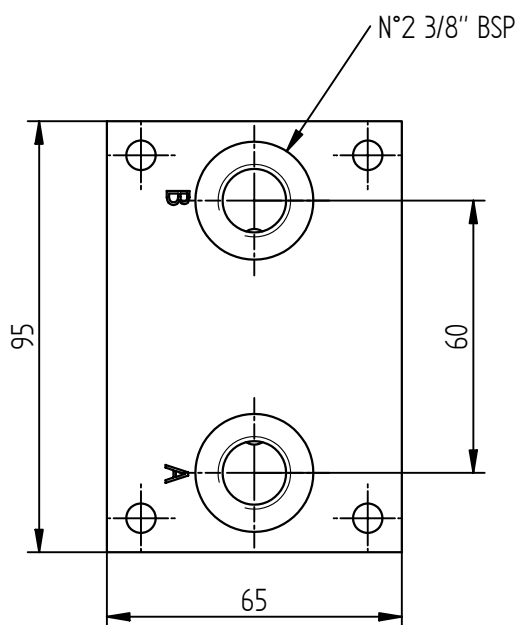
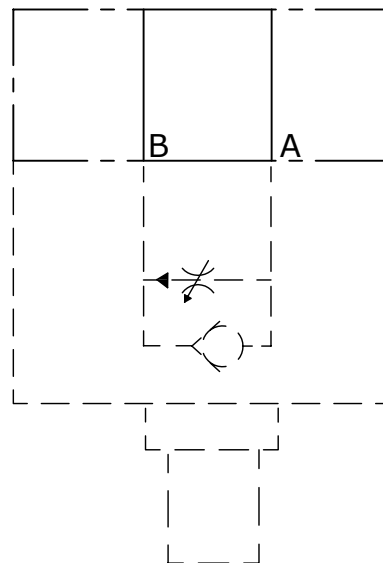
SEE DIAGRAMS

Via Nicolò Copernico 12/c-d
 29027 Casoni Di Gariga - Podenzano (PC) Italy

www.oleodinamica2mp.it
 Tel +39 0523 523231
 Fax +39 0523 524509

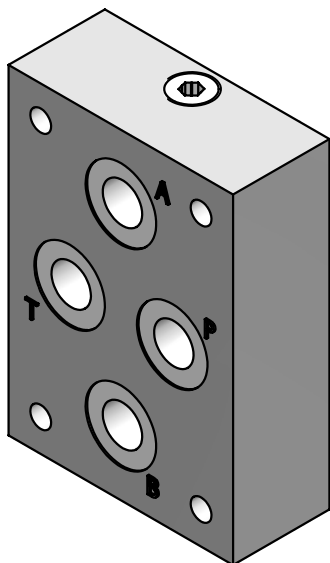


Schema idraulico
 Hydraulic diagram

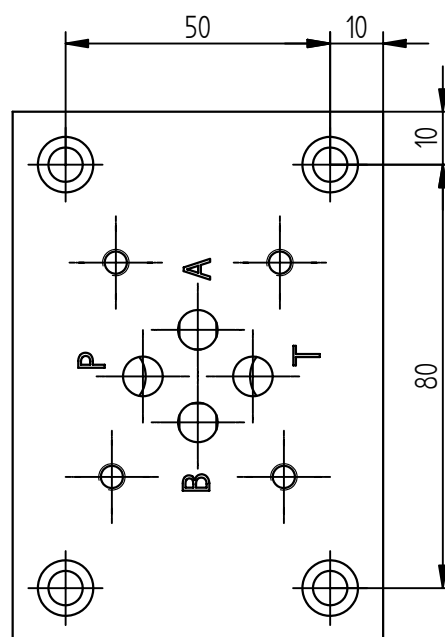
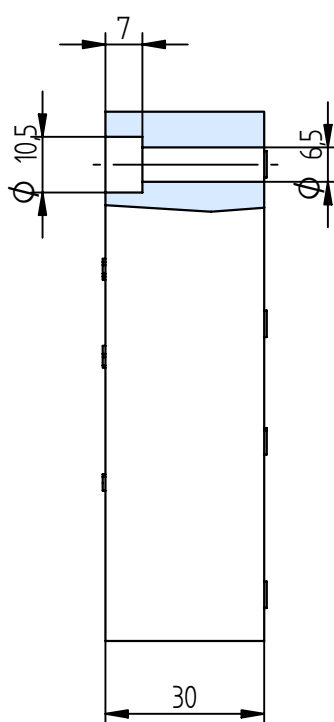
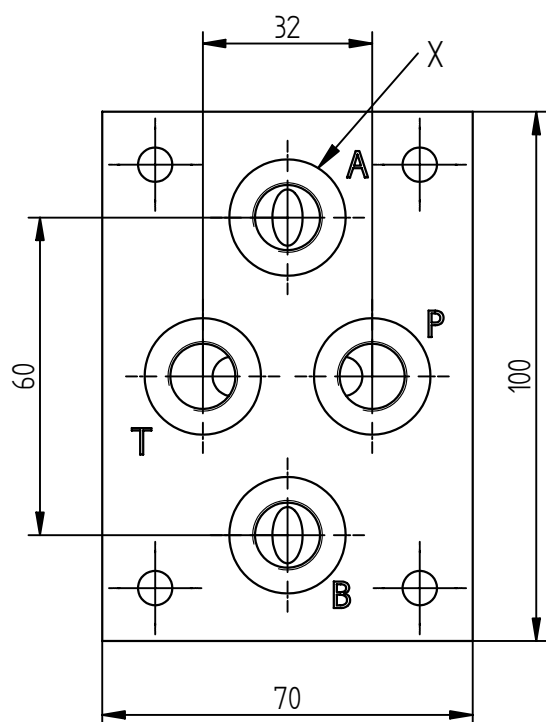
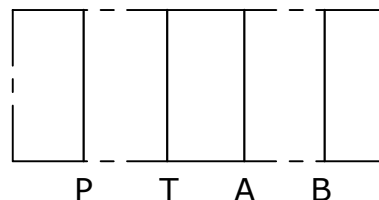


ES 06-02-38

S=STEEL
 A=ALUMINIUM



Schema idraulico
 Hydraulic diagram

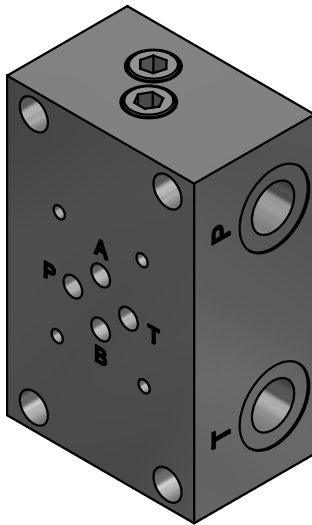


X = 1/4" BSP
 3/8" BSP
 1/2" BSP

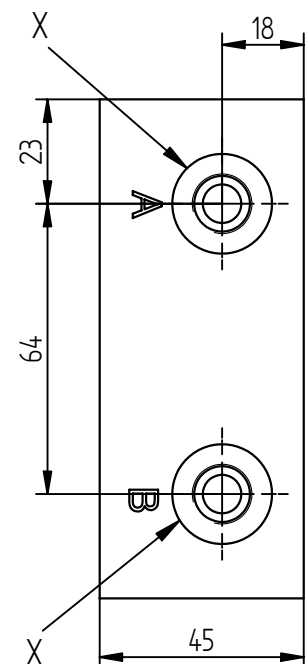
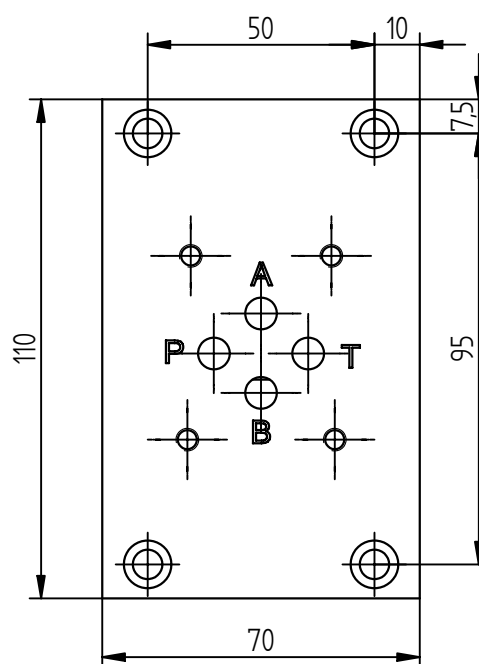
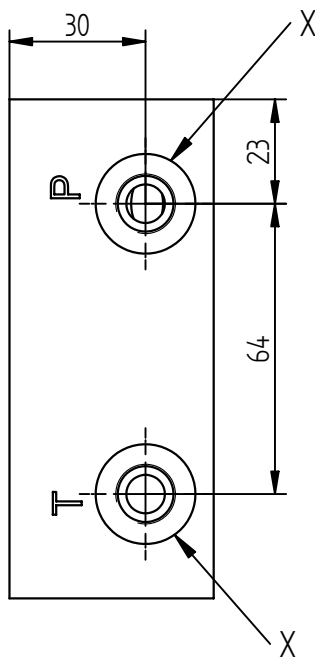
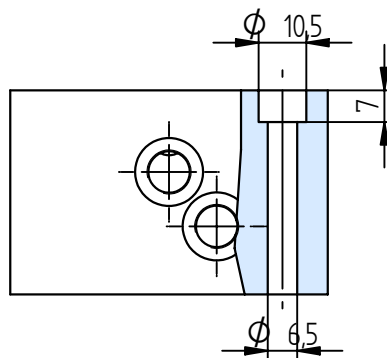
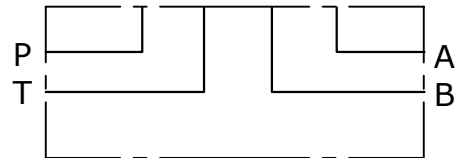
ES 06-07-14

S=STEEL
 A=ALUMINIUM

14=1/4"
 38=3/8"
 12=1/2"



Schema idraulico
 Hydraulic diagram

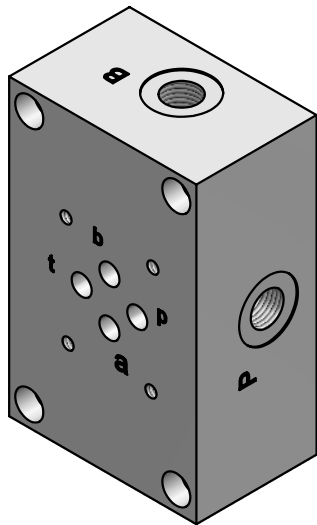


X = 1/4" BSP
 3/8" BSP
 1/2" BSP

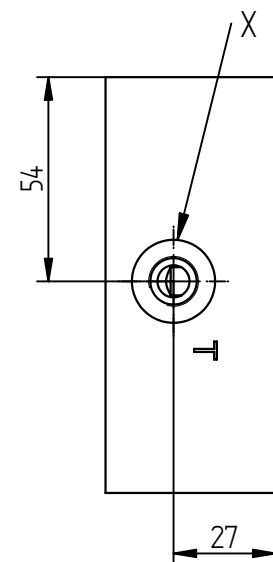
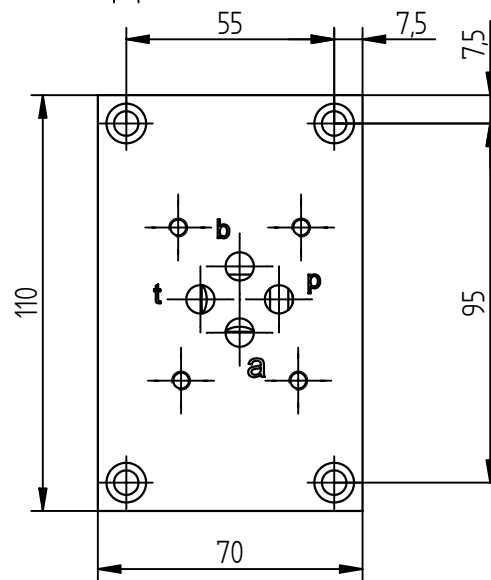
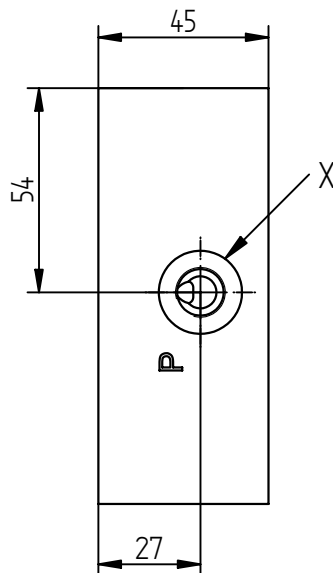
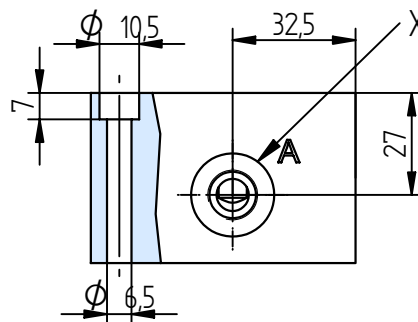
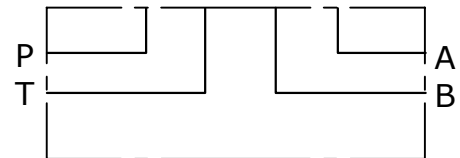
ES 06-08-14

S=STEEL
 A=ALUMINIUM

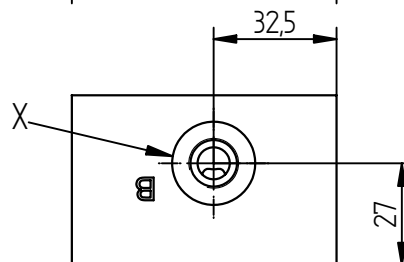
14=1/4"
 38=3/8"
 12=1/2"



Schema idraulico
 Hydraulic diagram



X = 1/4" BSP
 3/8" BSP
 1/2" BSP

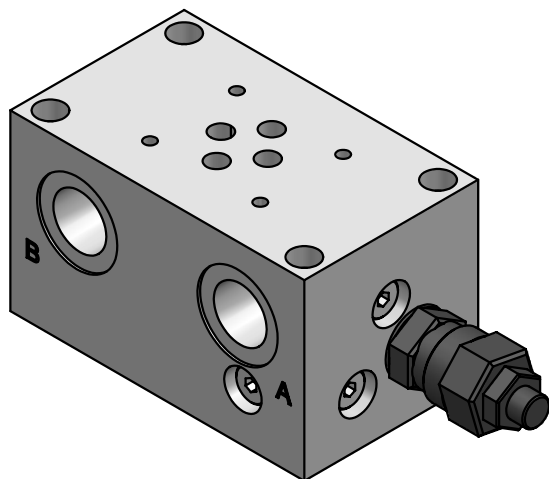


ES 06-09-14

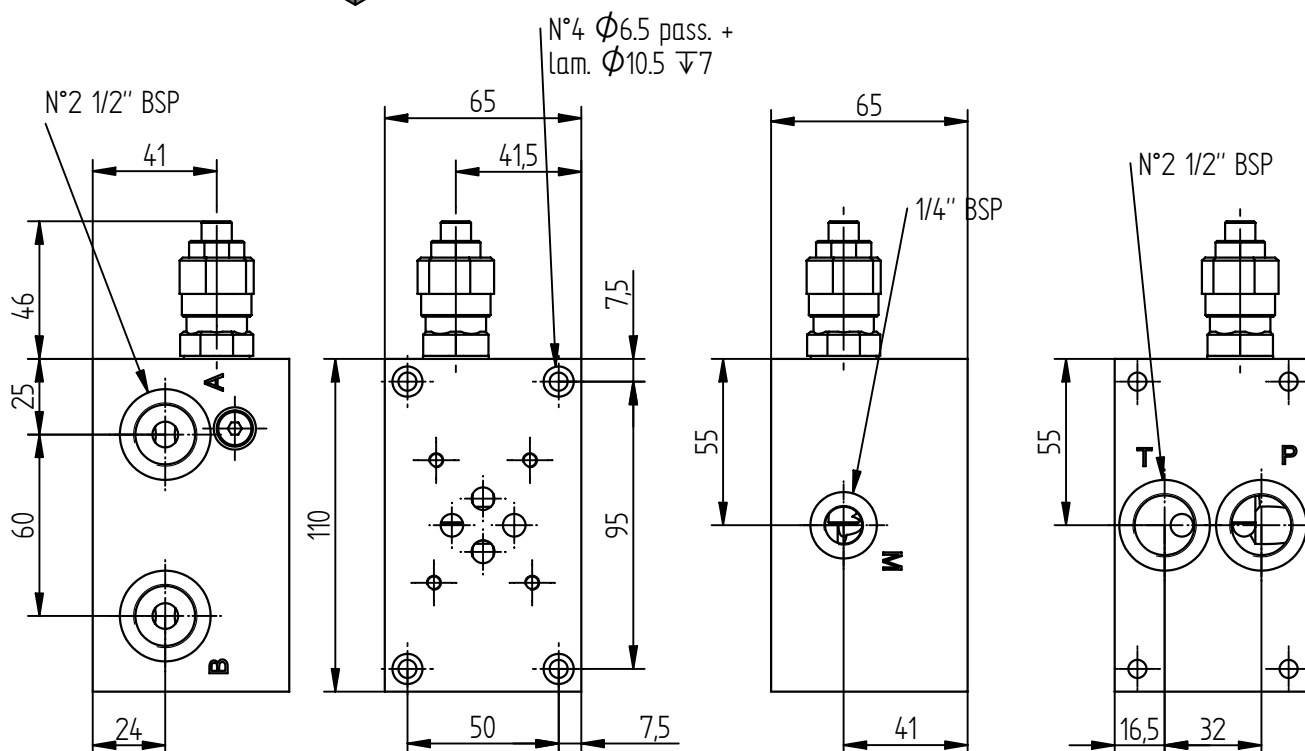
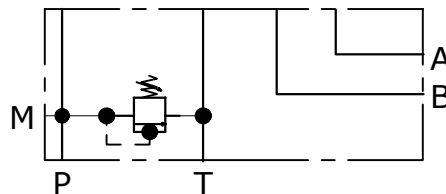
S=STEEL
 A=ALUMINIUM

14=1/4"
 38=3/8"
 12=1/2"

BASE SINGOLA CETOP 3 CON UTILIZZI A-B LAT. P-T POST. 1/2" BSP
SUB-PLATE CETOP 3 WITH A-B PORTS ON SIDE P-T BACK 1/2" BSP



Schema idraulico
Hydraulic diagram



Valve and cavity = see page C01

ES 06-10-12-0-0-H

S=STEEL
A=ALUMINIUM

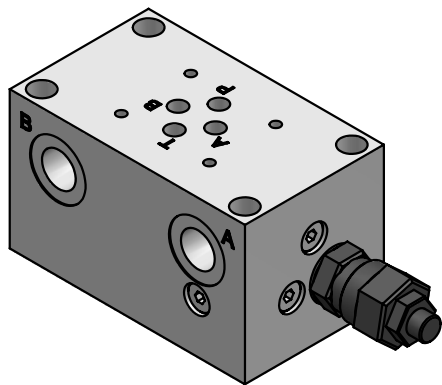
0=WITHOUT RELIEF VALVE
1=WITH R. V.
2=R.V. READY

H=HEXAGONAL HEAD SCREW
K=KNOB see page V01

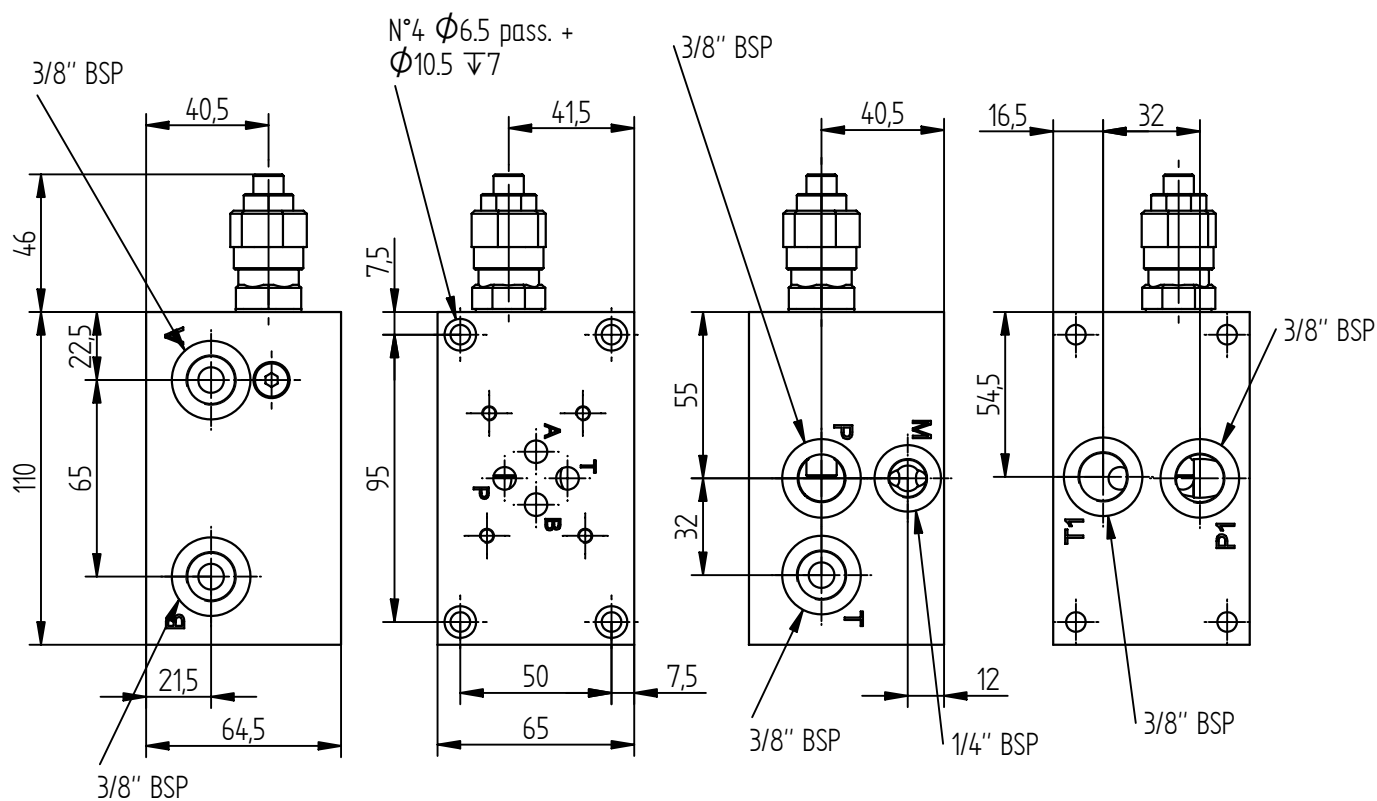
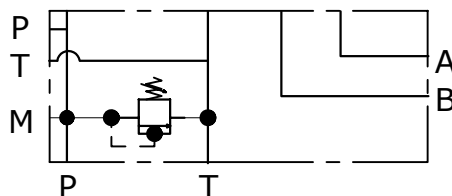
0=WITHOUT R.V.
1=5-50 BAR
2=30-100 BAR
3=50-250 BAR
4=100-350 BAR

Via Nicolò Copernico 12/c-d
29027 Casoni Di Gariga - Podenzano (PC) Italy

www.oleodinamica2mp.it
Tel +39 0523 523231
Fax +39 0523 524509



Schema idraulico
Hydraulic diagram



Valve and cavity = see page C01

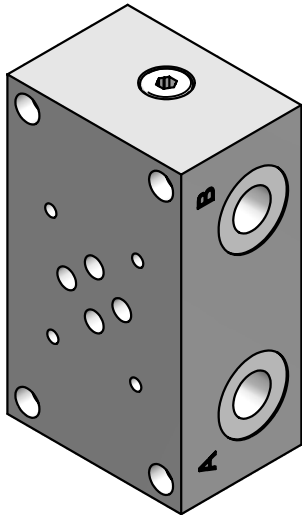
ES 06-10-38-0-0-H

S=STEEL
A=ALUMINIUM

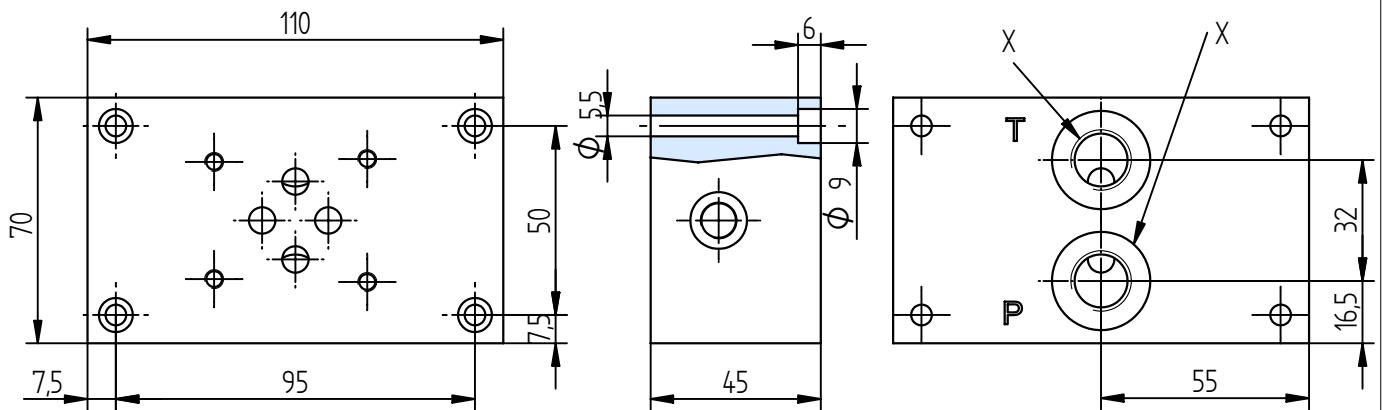
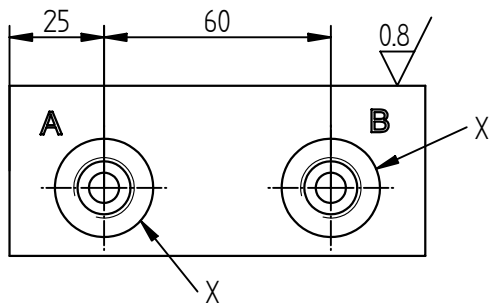
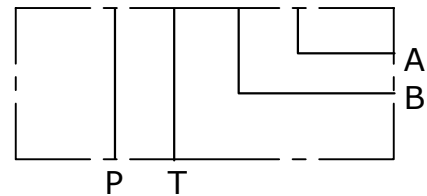
0=WITHOUT RELIEF VALVE
1=WITH R. V.
2=R.V. READY

H=HEXAGONAL HEAD SCREW
K=KNOB see page V01

0=WITHOUT R.V.
1=5-50 BAR
2=30-100 BAR
3=50-250 BAR
4=100-350 BAR



Schema idraulico
 Hydraulic diagram

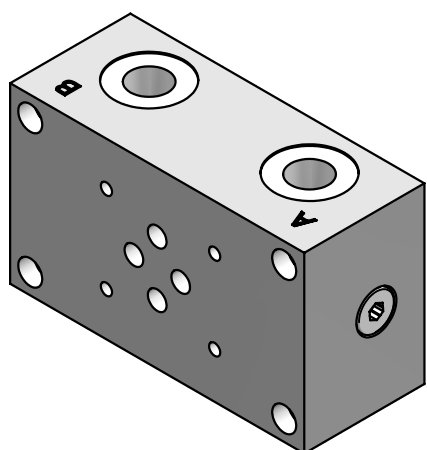


X = 3/8" BSP
 1/2" BSP

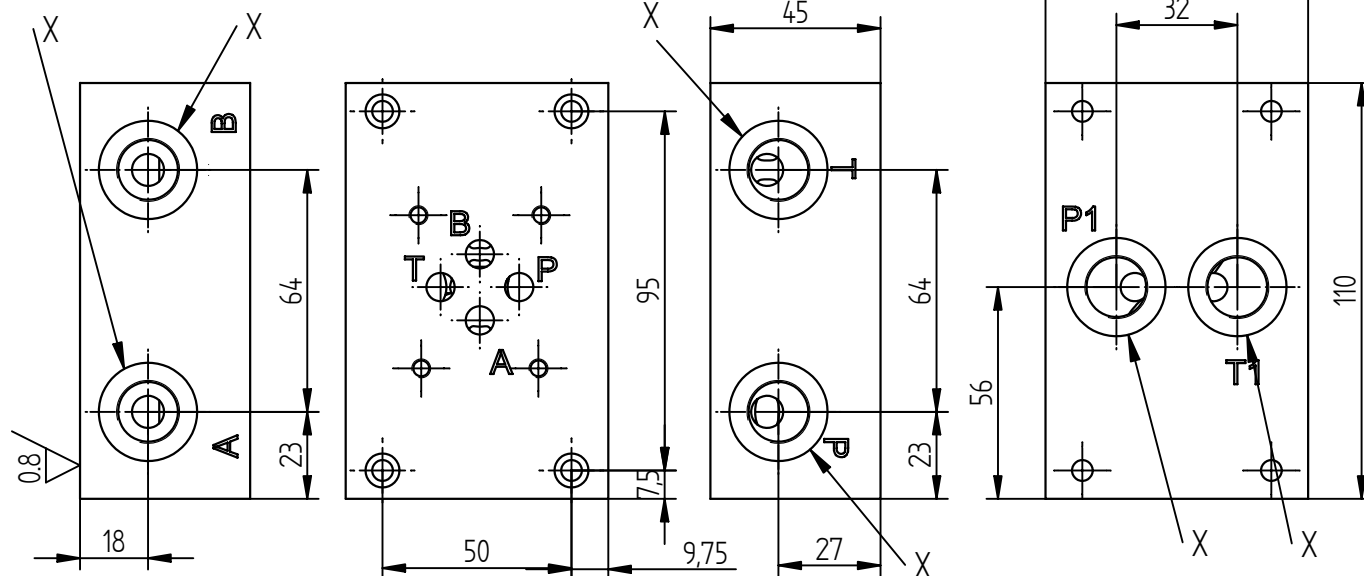
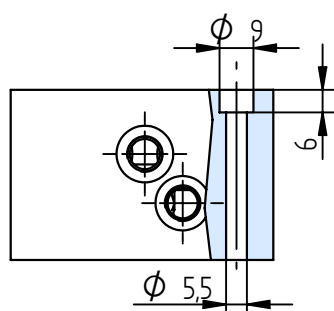
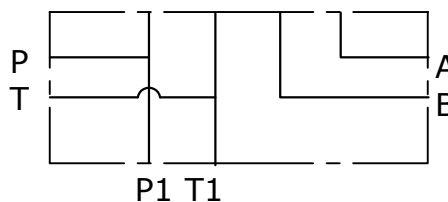
ES 06-15-38

S=STEEL
 A=ALUMINIUM

38=3/8"
 12=1/2"



Schema idraulico
 Hydraulic diagram



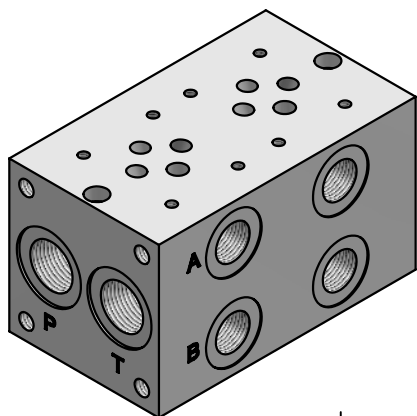
X = 1/4" BSP
 3/8" BSP

ES 06-16-38

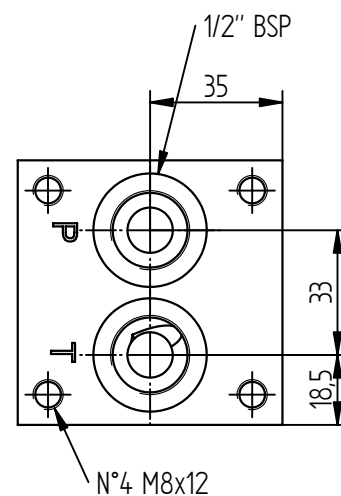
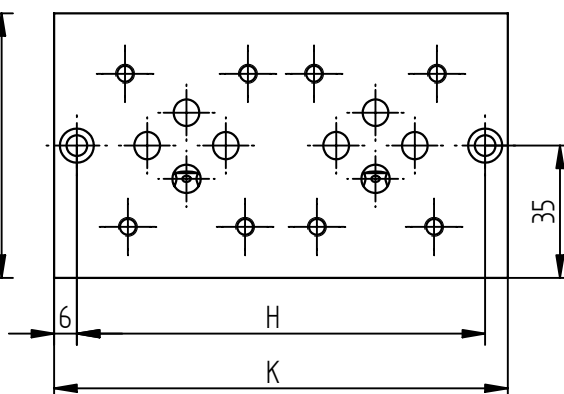
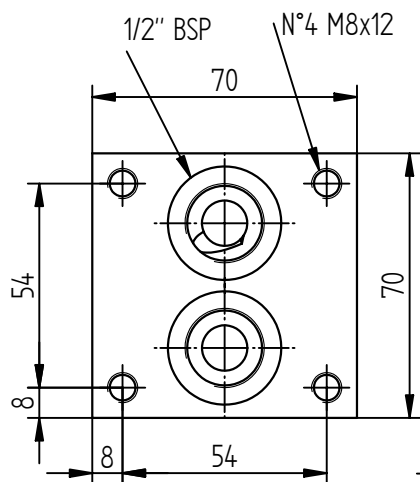
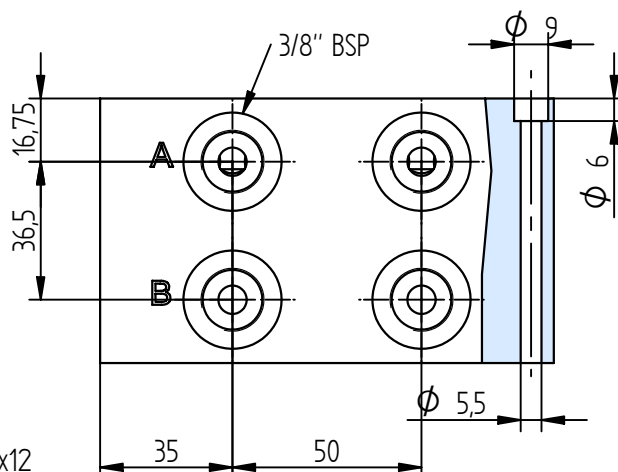
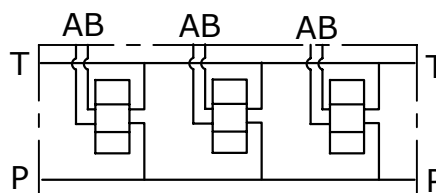
S=STEEL
 A=ALUMINIUM

38=3/8"
 12=1/2"

MONOBLOCCO A-B LATERALI 3/8" P-T 1/2" BSP
MONOBLOCK A-B ON SIDE 3/8" P-T 1/2" BSP



Schema idraulico
Hydraulic diagram



ES 06-12-38-02

S=STEEL
A=ALUMINIUM

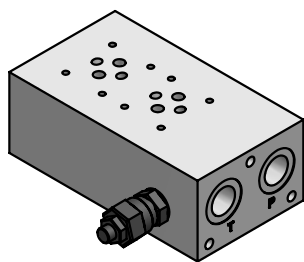
MOUNTING POSITIONS: 01÷10

POS.	01	02	03	04	05	06	07	08	09	10
H	58	108	158	208	258	308	358	408	458	508
K	70	120	170	220	270	320	370	420	470	520

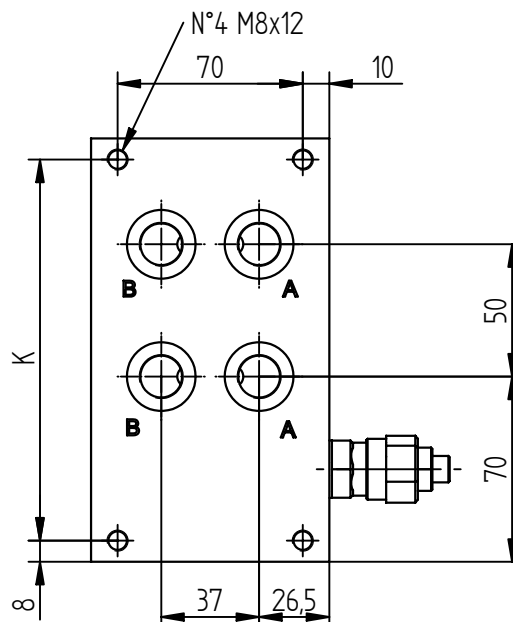
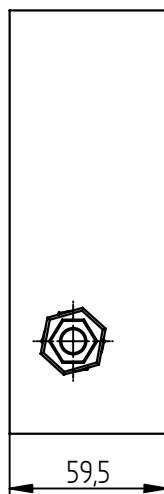
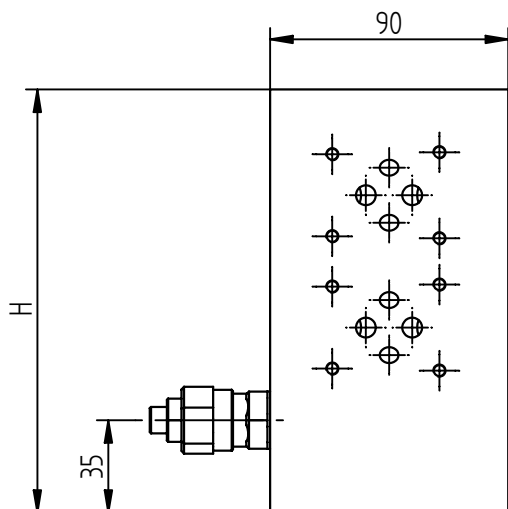
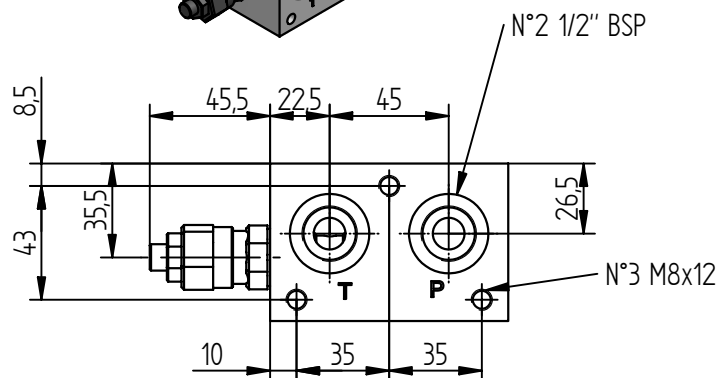
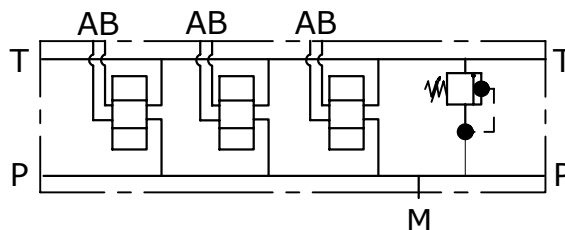
Via Nicolò Copernico 12/c-d
 29027 Casoni Di Gariga - Pordenzano (PC) Italy

www.oleodinamica2mp.it
 Tel +39 0523 523231
 Fax +39 0523 524509

MONOBLOCCO A-B POSTERIORI 3/8" O 1/2" P-T 1/2"
MONOBLOCK A-B BACK PORTS 3/8" OR 1/2" P-T 1/2"



Schema idraulico
Hydraulic diagram



Cavity and valve=see page C01

ES 06-13-38-02-0-0-H

S=STEEL
A=ALUMINIUM

38=3/8"
12=1/2"

MOUNTING POSITIONS: 02÷10

H=HEXAGONAL HEAD SCREW
K=KNOB see page V01

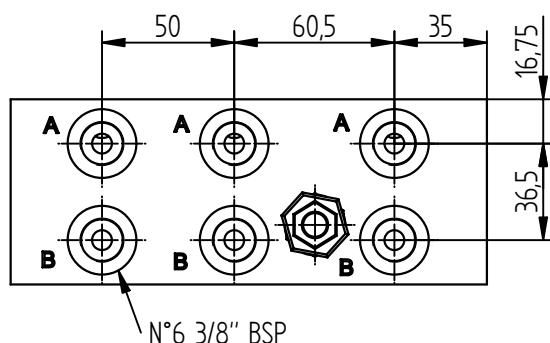
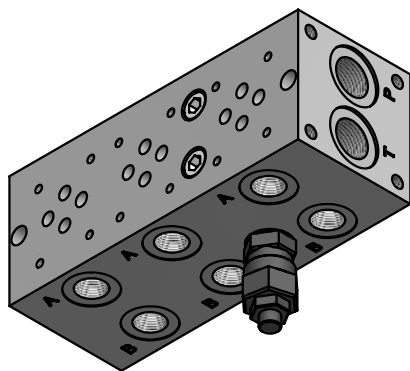
0=WITHOUT R.V.
1=5-50 BAR
2=30-100 BAR
3=50-250 BAR
4=100-350 BAR

0=WITHOUT RELIEF VALVE
1=WITH R. V.
2=R.V. READY

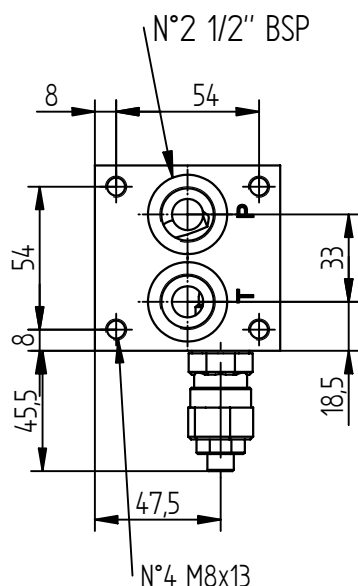
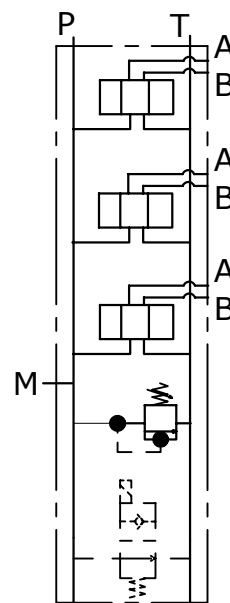
POS.	02	03	04	05	06	07	08	09	10
H	160	210	260	310	360	410	460	510	560
K	144	194	244	294	344	394	444	494	544

Via Nicolò Copernico 12/c-d
29027 Casoni Di Gariga - Podenzano (PC) Italy

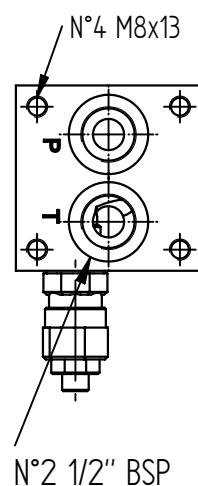
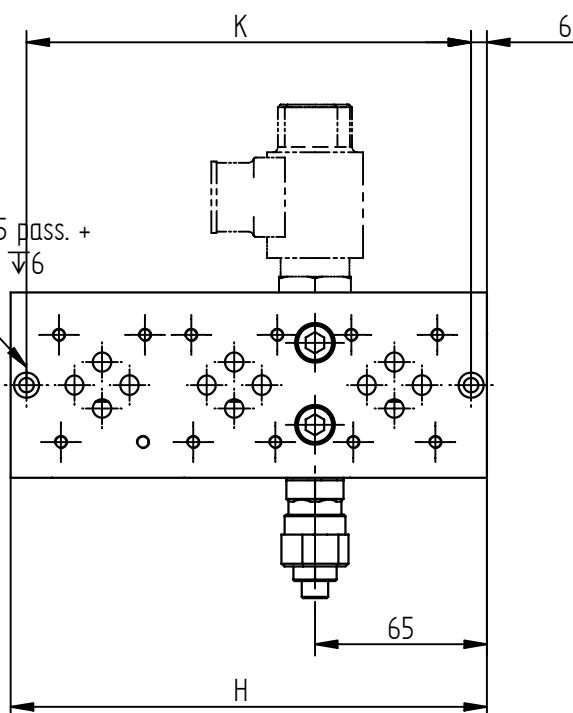
www.oleodinamica2mp.it
Tel +39 0523 523231
Fax +39 0523 524509



Schema idraulico
 Hydraulic diagram



N°2 Ø5.5 pass. +
 lam. Ø9 √6



Valve and cavity = see page C01

ES 06-14-38-02-0-0-H-12AC

S=STEEL
 A=ALUMINIUM

MOUNTING POSITIONS: 01÷10

0=WITHOUT RELIEF VALVE
 1=WITH R. V.
 2=R. V. READY
 3=VENTING VALVE READY
 4=WITH R. V. and V. V. READY
 5=WITH R. V. and V. V.

OPTIONAL:
 ELECTRICAL VALVE VOLTAGE:
 12AC - 12DC - 24AC - 24DC

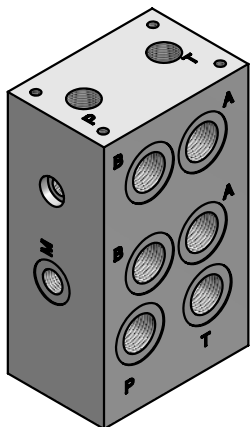
H=HEXAGONAL HEAD SCREW
 K=KNOB see page V01

0=WITHOUT R.V.
 1=5-50 BAR
 2=30-100 BAR
 3=50-250 BAR
 4=100-350 BAR

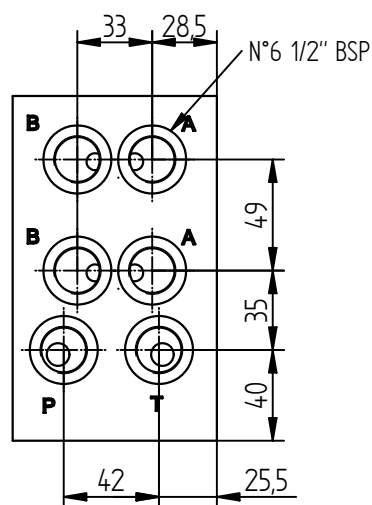
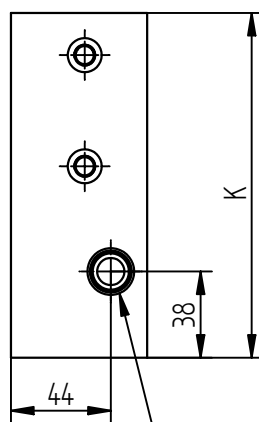
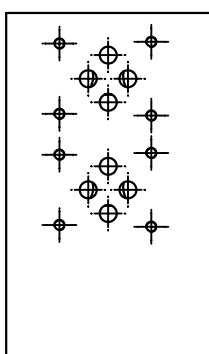
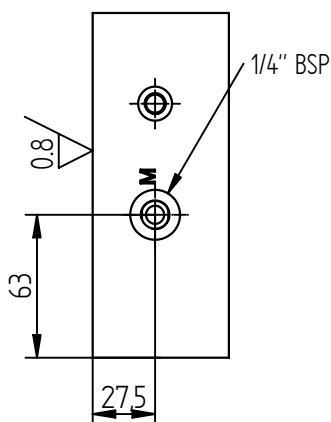
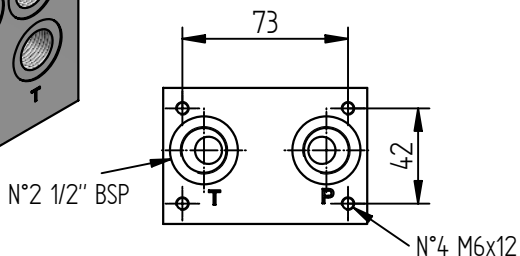
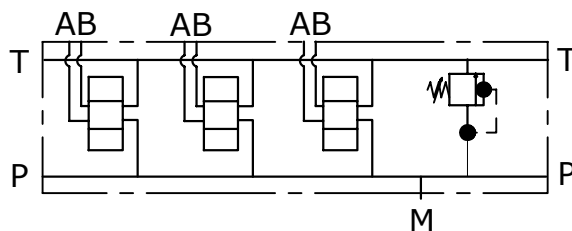
POS.	01	02	03	04	05	06	07	08	09	10
H	90	130	180	230	280	330	380	430	480	530
K	78	118	168	218	268	318	368	418	468	518

Via Nicolò Copernico 12/c-d
 29027 Casoni Di Gariga - Pordenzano (PC) Italy

www.oleodinamica2mp.it
 Tel +39 0523 523231
 Fax +39 0523 524509

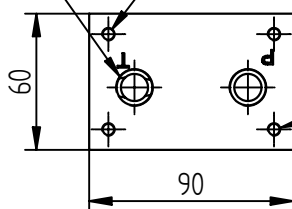


Schema idraulico
Hydraulic diagram



N°2 1/2" BSP

N°4 M6x12



Predisposizione per pannelli modulari
Arranged for modular panels
(vedi pag. / see pages from 51)

Cavity and valve =see page C01

ES 06-18-12-02-0-0-H

S=STEEL
A=ALUMINIUM

MOUNTING POSITIONS: 02÷08

0=WITHOUT RELIEF VALVE
1=WITH DRV R.V.
2=WITH PRV R.V.
3=R.V. READY

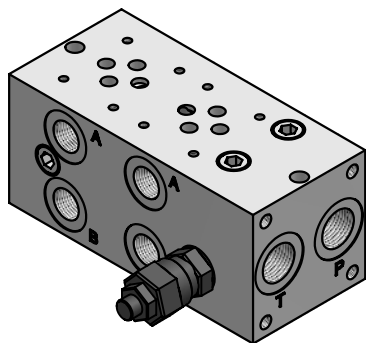
H=HEXAGONAL HEAD SCREW
K=KNOB see page V01

0=WITHOUT R.V.
1=<70 BAR
2=<140 BAR
3=<210 BAR
4=<350 BAR

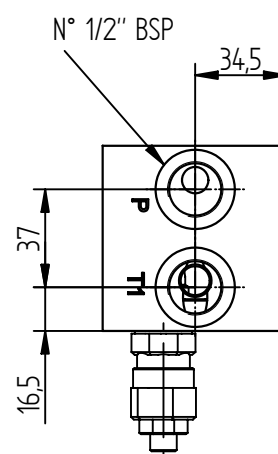
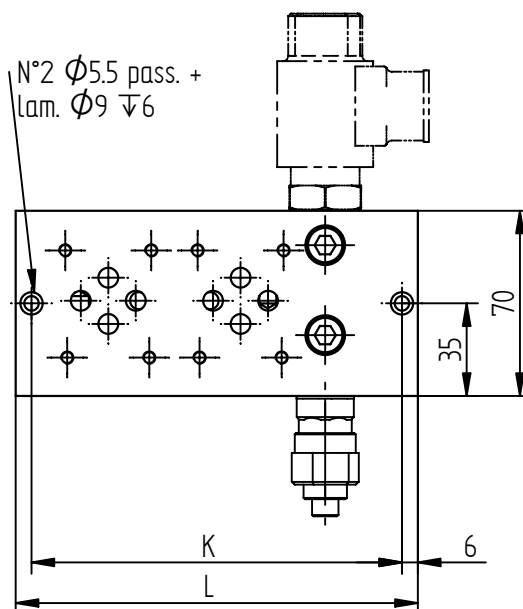
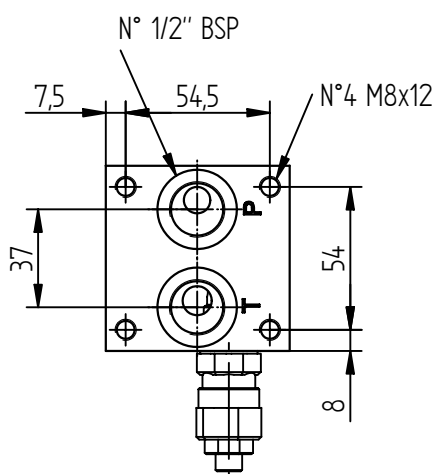
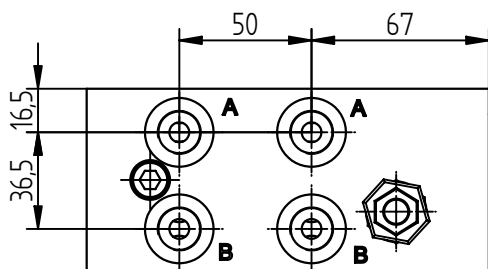
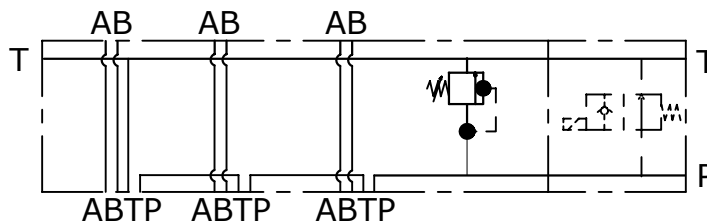
POS.	02	03	04	05	06	07	08
K	152	201	250	299	348	397	446

Via Nicolò Copernico 12/c-d
29027 Casoni Di Gariga - Podenzano (PC) Italy

www.oleodinamica2mp.it
Tel +39 0523 523231
Fax +39 0523 524509



Schema idraulico
Hydraulic diagram



Valve and cavity = see page C01

ES 06-19-38-02-0-0-H-12AC

S=STEEL
A=ALUMINIUM

MOUNTING POSITIONS: 02÷08

0=WITHOUT RELIEF VALVE
1=WITH R. V.
2=R. V. READY
3=VENTING VALVE READY
4=WITH R. V. and V. V. READY
5=WITH R. V. and V. V.

OPTIONAL:
ELECTRICAL VALVE VOLTAGE:
12AC - 12DC - 24AC - 24DC

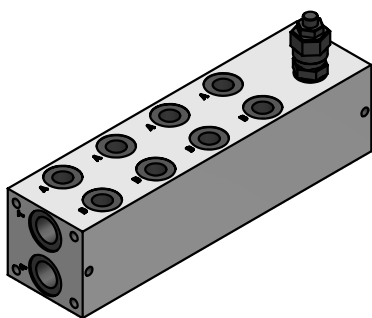
H=HEXAGONAL HEAD SCREW
K=KNOB see page V01

0=WITHOUT R.V.
1=5-50 BAR
2=30-100 BAR
3=50-250 BAR
4=100-350 BAR

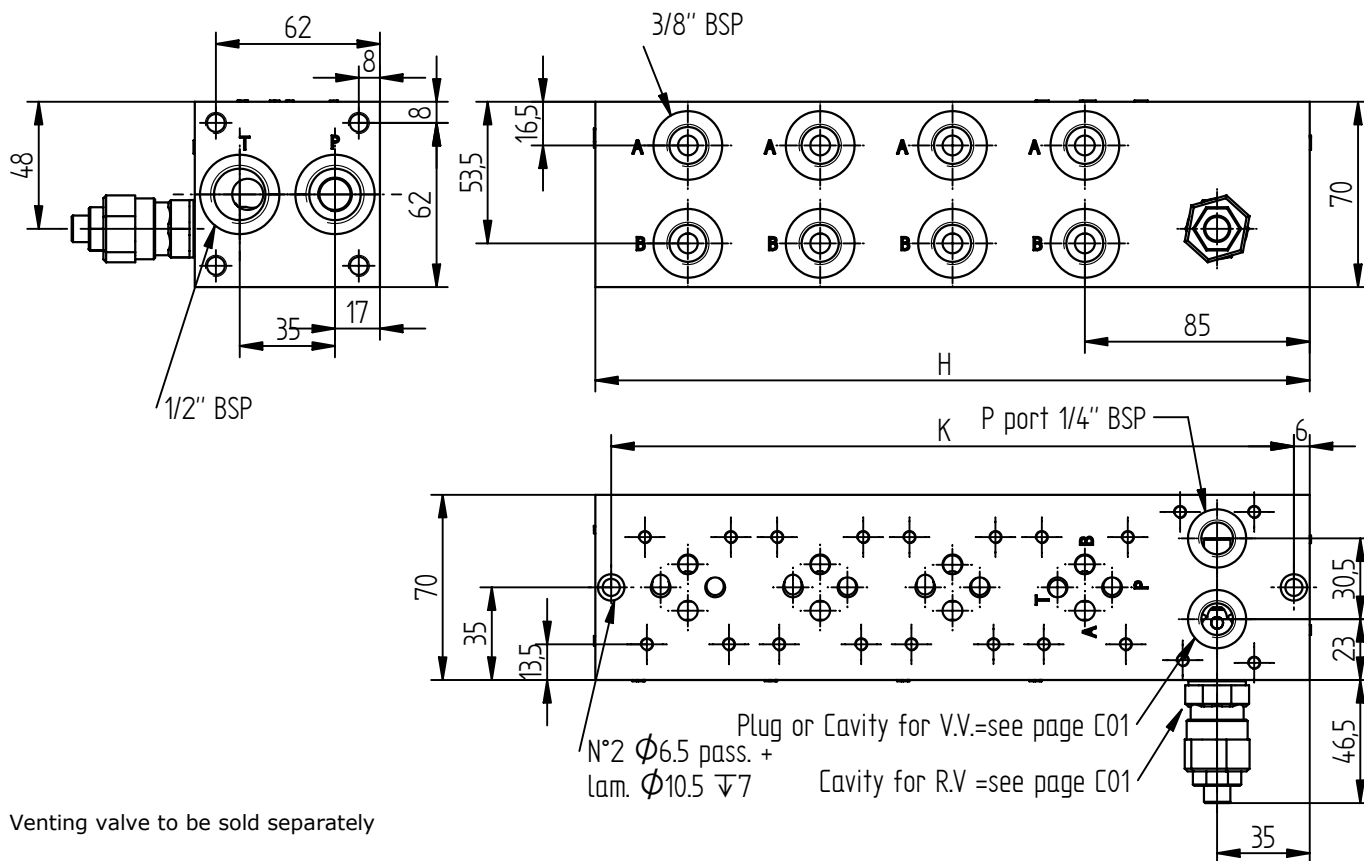
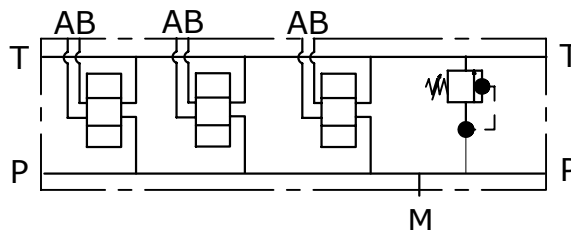
POS.	02	03	04	05	06	07	08
H	152	202	252	302	352	402	452
K	140	190	240	290	340	390	440

Via Nicolò Copernico 12/c-d
29027 Casoni Di Gariga - Pordenzano (PC) Italy

www.oleodinamica2mp.it
Tel +39 0523 523231
Fax +39 0523 524509



Schema idraulico
Hydraulic diagram



Venting valve to be sold separately

ES 06-21-38-02-0-0-H

S=STEEL
A=ALUMINIUM

MOUNTING POSITIONS: 01÷10

0=WITHOUT RELIEF VALVE
1=WITH R. V.
2=R. V. READY
3=VENTING VALVE READY
4=WITH R. V. and V. V. READY

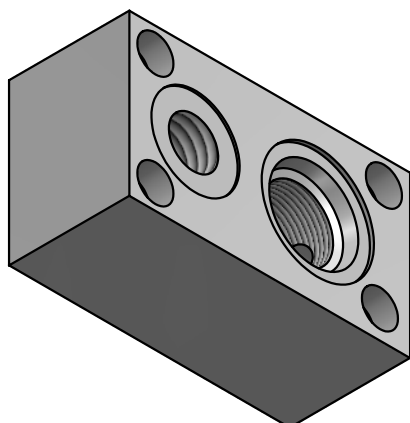
H=HEXAGONAL HEAD SCREW
K=KNOB see page V01

0=WITHOUT R.V.
1=5-50 BAR
2=30-100 BAR
3=50-250 BAR
4=100-350 BAR

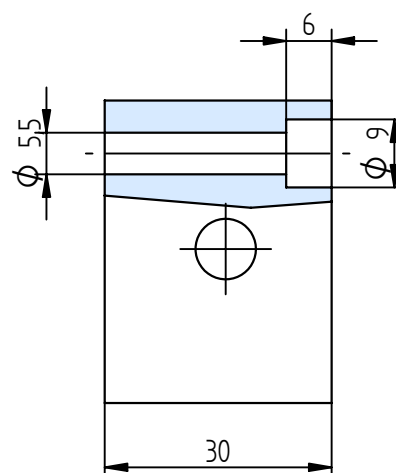
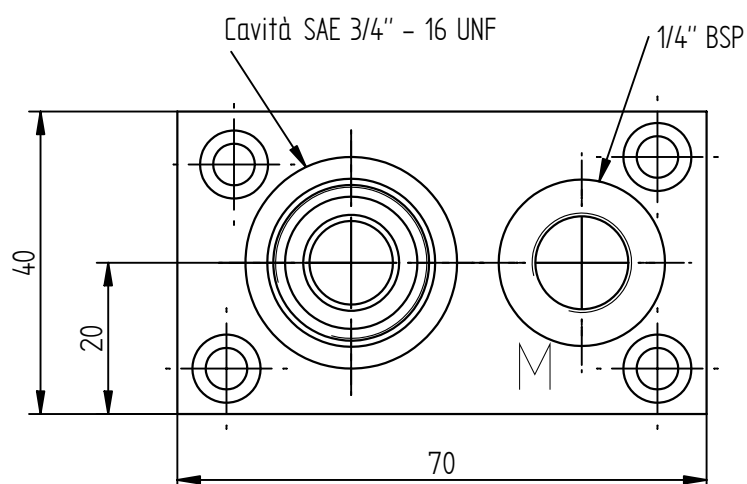
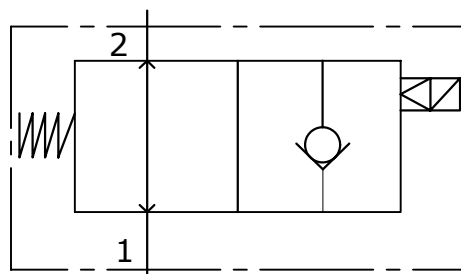
POS.	01	02	03	04	05	06	07	08	09	10
H	120	170	220	270	320	370	420	470	520	570
K	108	158	208	258	308	358	408	458	508	558

Via Nicolò Copernico 12/c-d
29027 Casoni Di Gariga - Podenzano (PC) Italy

www.oleodinamica2mp.it
Tel +39 0523 523231
Fax +39 0523 524509



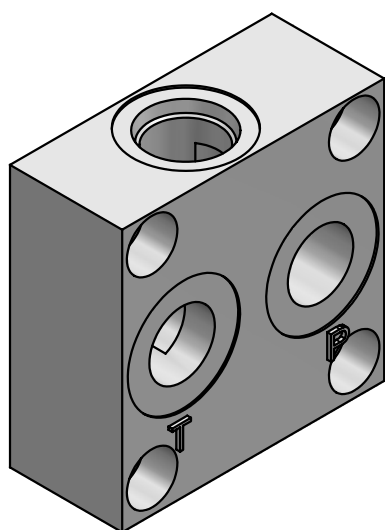
Schema idraulico
 Hydraulic diagram



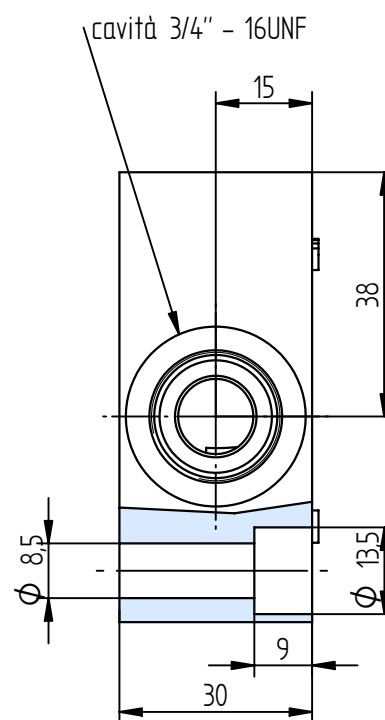
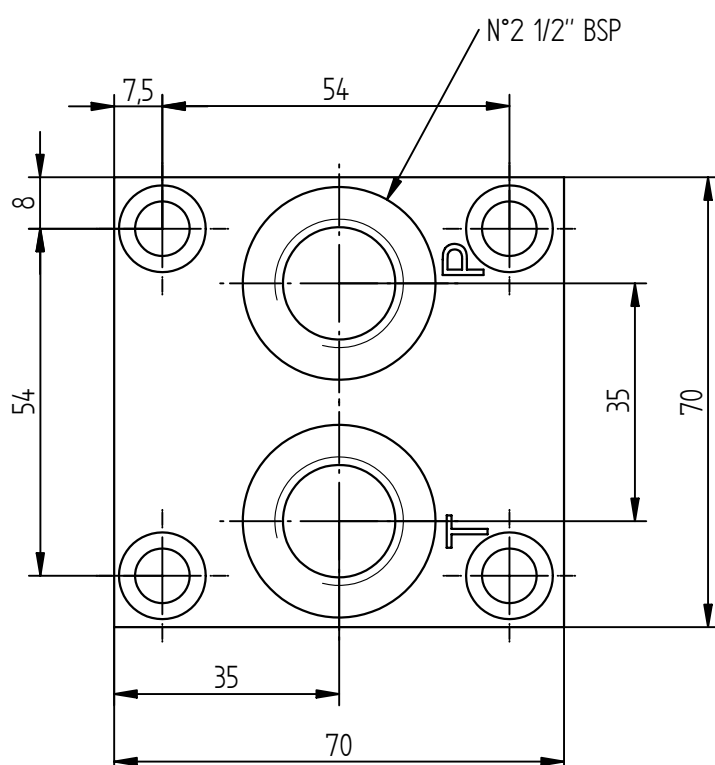
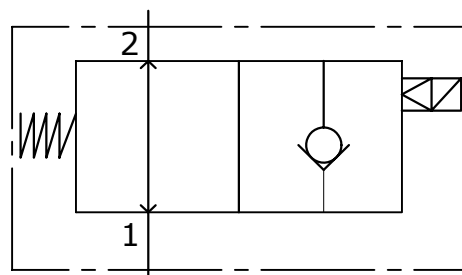
Venting valve to be sold separately

ES 06-24

S=STEEL
 A=ALUMINIUM



Schema idraulico
Hydraulic diagram



Available: electrical venting valve see page C01

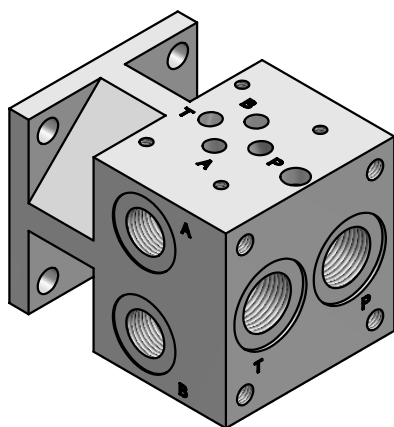
AVAILABLE FOR:

ES06-12
ES06-14
ES06-19
ES06-21

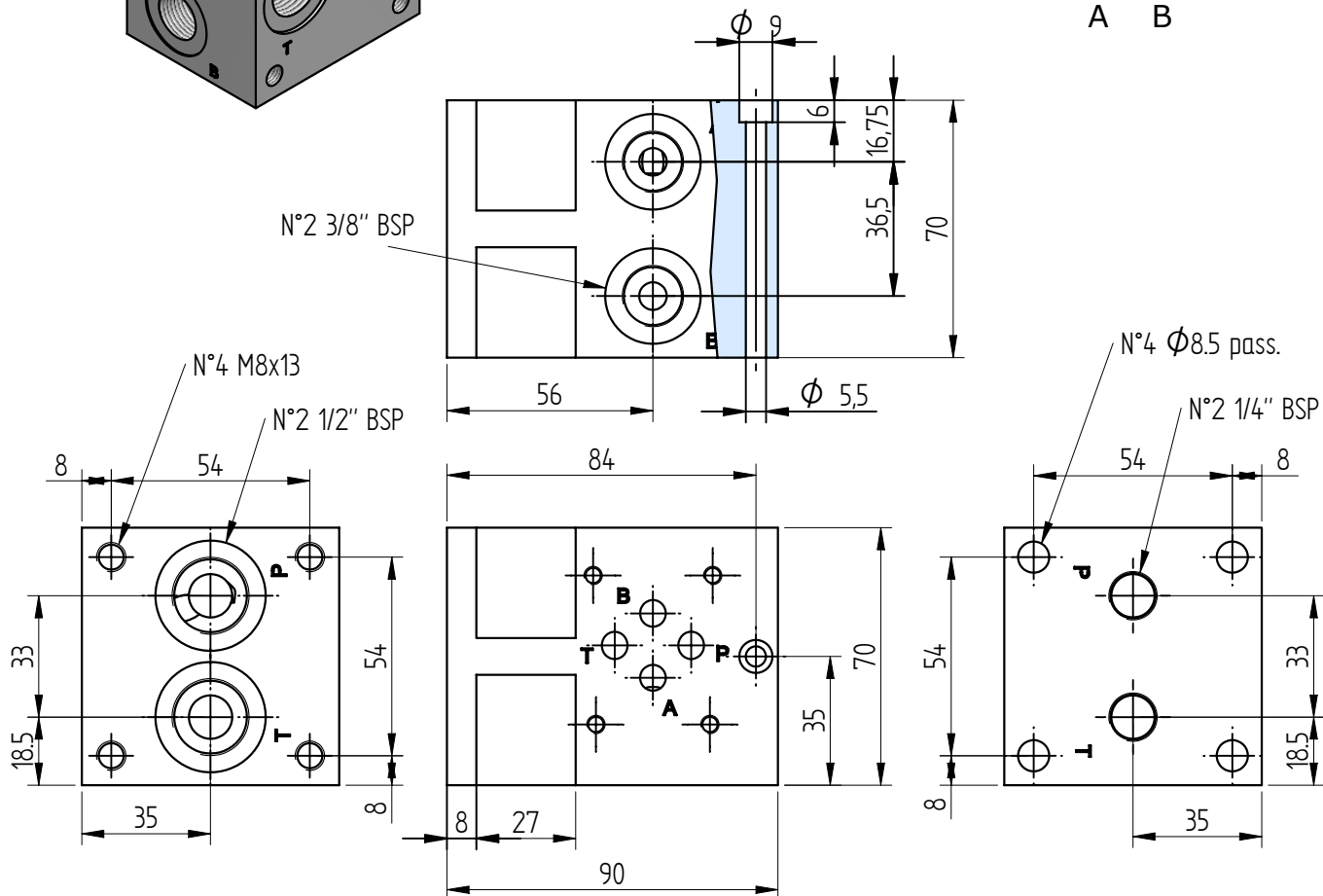
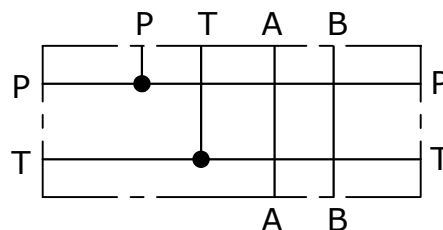
ES 06-17-12

S=STEEL
A=ALUMINIUM

PANNELLO MODULARE A-B LATERALE 3/8" P-T 1/2"
MODULAR PLATE A-B ON SIDE 3/8" P-T 1/2"



Schema idraulico
Hydraulic diagram



AVAILABLE FOR:

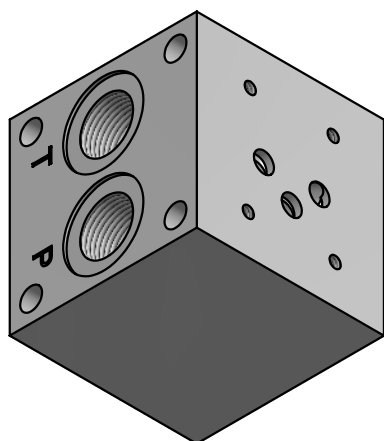
ES06-12
 ES06-14
 ES06-19
 ES06-21

ES 06-27-38

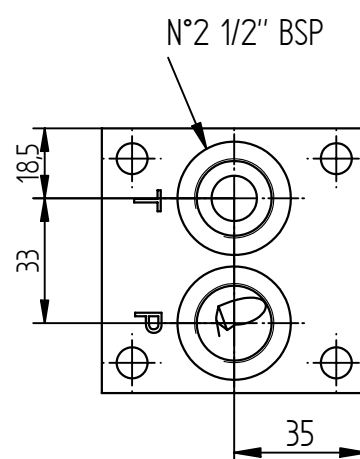
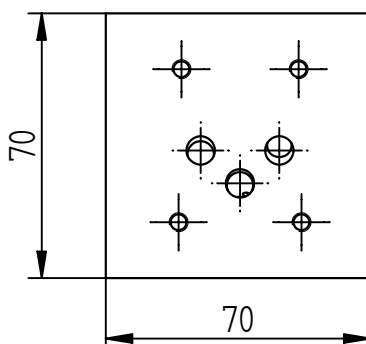
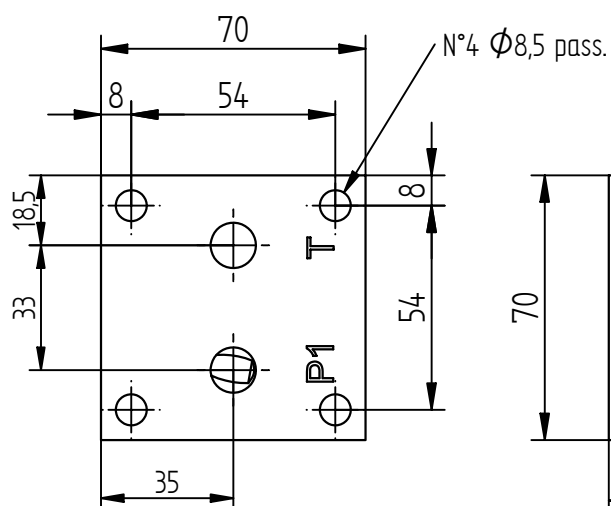
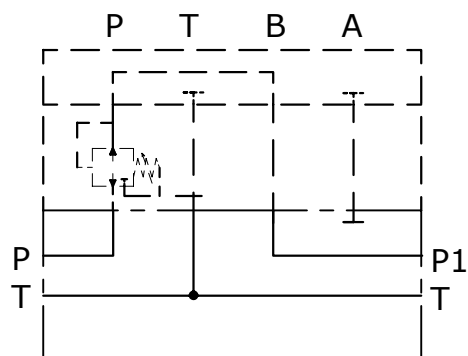
S=STEEL
 A=ALUMINIUM

Via Nicolò Copernico 12/c-d
 29027 Casoni Di Gariga - Pordenzano (PC) Italy

www.oleodinamica2mp.it
 Tel +39 0523 523231
 Fax +39 0523 524509



Schema idraulico
 Hydraulic diagram



AVAILABLE FOR:

ES06-12

ES06-14

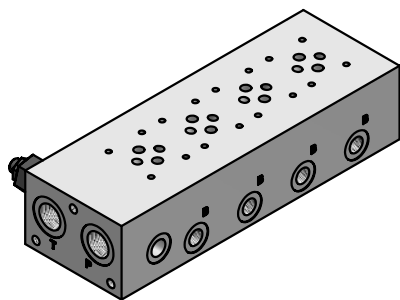
ES06-19

ES06-21

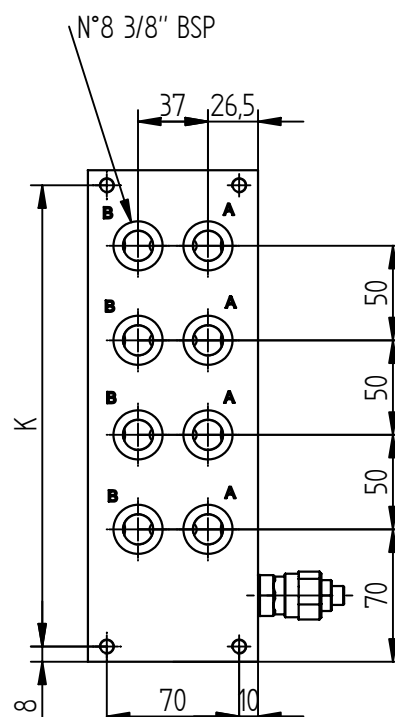
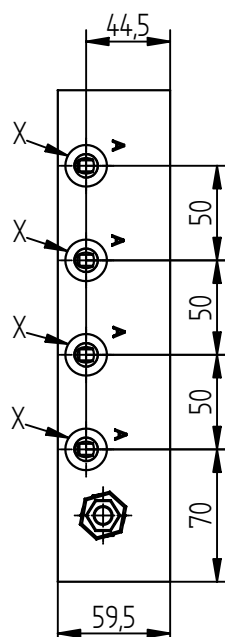
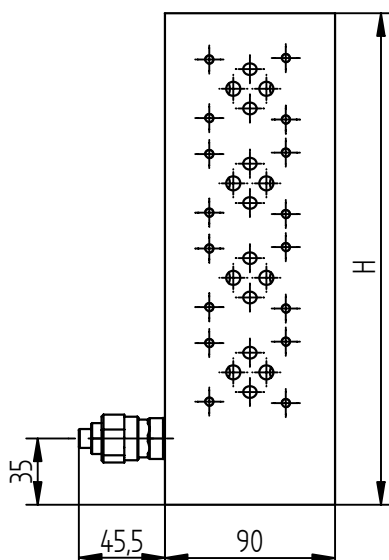
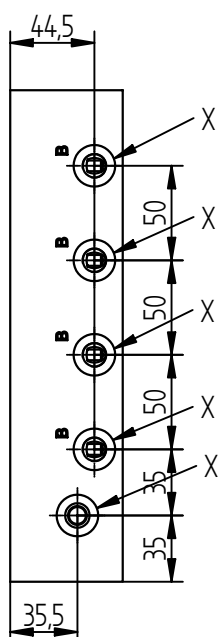
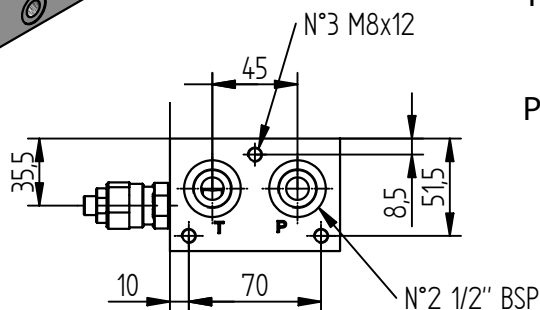
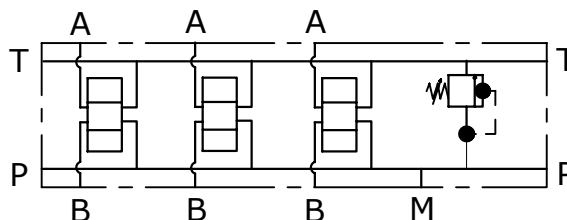
ES 06-29

S=STEEL
 A=ALUMINIUM

MONOBLOCCO A-B POSTERIORI 3/8" LATERALI 1/4" (3/8") P-T 1/2" BSP
MONOBLOCK A-B BACK 3/8" ON SIDE 1/4" (3/8") P-T 1/2" BSP



Schema idraulico
Hydraulic diagram



Cavity and valve = see page C01

ES 06-25-38-02-00-0-0-H

X = 1/4" BSP
3/8" BSP

S=STEEL
A=ALUMINIUM

MOUNTING POSITIONS: 01÷10

14=1/4"
38=3/8"

H=HEXAGONAL HEAD SCREW
K=KNOB see page V01

0=WITHOUT R.V.
1=5-50 BAR
2=30-100 BAR
3=50-250 BAR
4=100-350 BAR

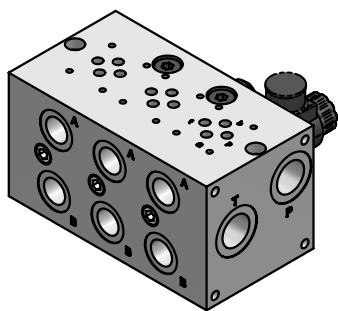
0=WITHOUT RELIEF VALVE
1=WITH R. V.
2=R.V. READY

Venting valve to be sold separately

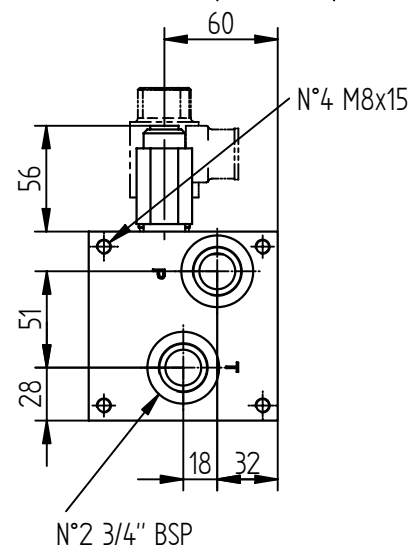
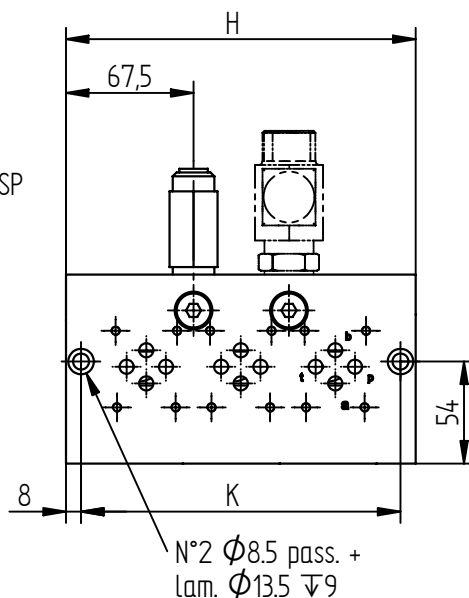
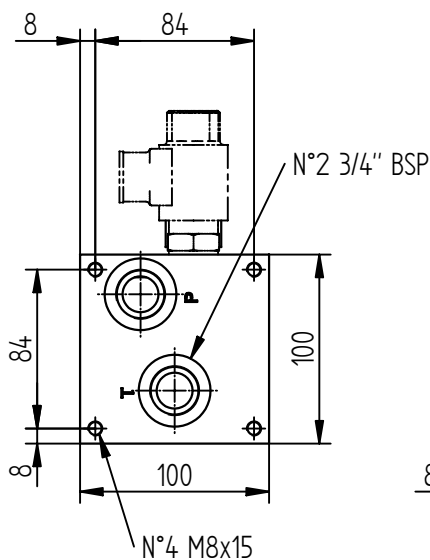
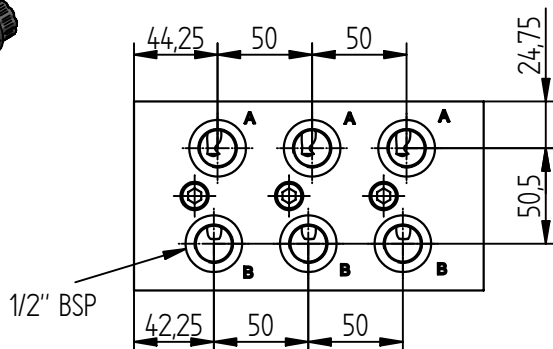
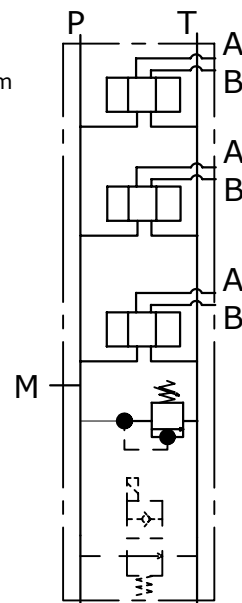
POS.	01	02	03	04	05	06	07	08	09	10
H	110	160	210	260	310	360	410	460	510	560
K	94	144	194	244	294	344	394	444	494	594

Via Nicolò Copernico 12/c-d
29027 Casoni Di Gariga - Pordenzano (PC) Italy

www.oleodinamica2mp.it
Tel +39 0523 523231
Fax +39 0523 524509



Schema idraulico
 Hydraulic diagram



ES 06-28-12-02-0-0-H

S=STEEL
 A=ALUMINIUM

MOUNTING POSITIONS: 02÷06

0=WITHOUT RELIEF VALVE
 1=WITH R. V.
 2=R. V. READY
 3=VENTING VALVE READY
 4=WITH R. V. and V. V. READY
 5=R.V. and V.V.

H=HEXAGONAL HEAD SCREW
 K=KNOB see page V01

0=WITHOUT R.V.
 1=<55 BAR
 2=<118 BAR
 3=<207 BAR
 4=<297 BAR

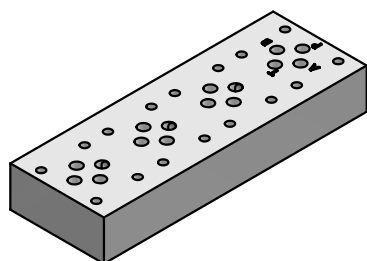
Venting valve to be sold separately

VALVE AND CAVITY=SEE PAGE C01

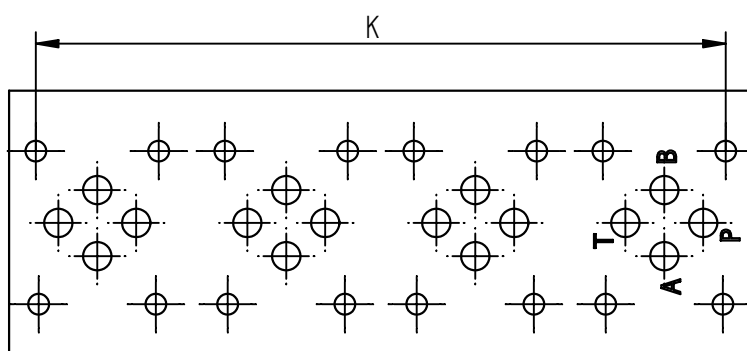
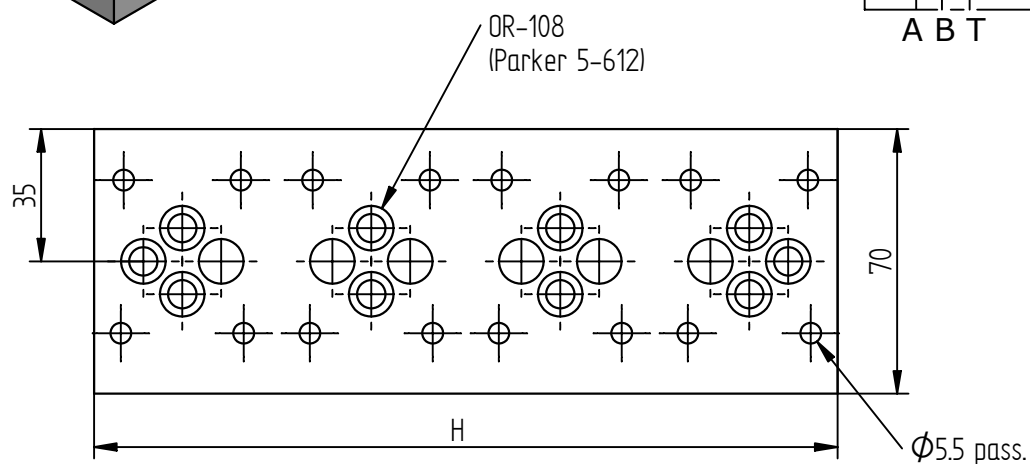
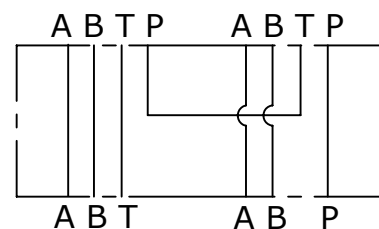
POS.	02	03	04	05	06
H	145	185	235	285	335
K	129	169	219	269	319

Via Nicolò Copernico 12/c-d
 29027 Casoni Di Gariga - Pordenzano (PC) Italy

www.oleodinamica2mp.it
 Tel +39 0523 523231
 Fax +39 0523 524509



Schema idraulico
 Hydraulic diagram



ES 06-23-02

S=STEEL
 A=ALUMINIUM

MOUNTING POSITIONS: 02÷05

POS.	01	02	03	04	05
H	//	97	147	197	247
K	//	83	133	183	233

Via Nicolò Copernico 12/c-d
 29027 Casoni Di Gariga - Pordenzano (PC) Italy

www.oleodinamica2mp.it
 Tel +39 0523 523231
 Fax +39 0523 524509