

ATO

HYDRAULIC POWER



CUSTOM BUILT POWER UNITS

PT Industrial's ATO program (Assemble To Order) build custom made power units manufactured to your specifications. Using only quality components, sourced locally and abroad, we specialise in working with our customers to ensure the power unit they receive is the power unit that will get the job done!

*ATO Hydraulic Power - **providing custom solutions***

*Gear or Piston Pumps
Manifolds - up to 6 valves
Hi-Lo Manifolds
Pressure Gauges
Test Points
Filler Breathers
AC or DC
Suction Strainer
Return Filters
Coolers
Manual & Solenoid DCV's
Pressure Switches
Level Temp. Gauges
Pendants
Wireless Controllers
Electrical Control Boxes
20L - 400L Tanks*



PT Hydraulics Australia

19 Ricketts Rd,
Mt Waverley,
VIC 3149

P: 03 9562 8800

F: 03 9562 8080

E: sales@pthydraulics.com.au

CUSTOM BUILT POWER UNITS

Standard Configuration

- Vertically Mounted Motors up to 18.5 kW
- Hydraulics Tanks to 400L capacity
- Directional Valves -
 - CETOP 2
 - CETOP 3
 - CETOP 5
- Sandwich Valves to suit above
 - Relief
 - Flow Control
 - Check Valves
 - Pilot Operated Check Valves
- Manifold Stack Valves up to 6 Station
- In tank return line filtration
- Electrical control boxes

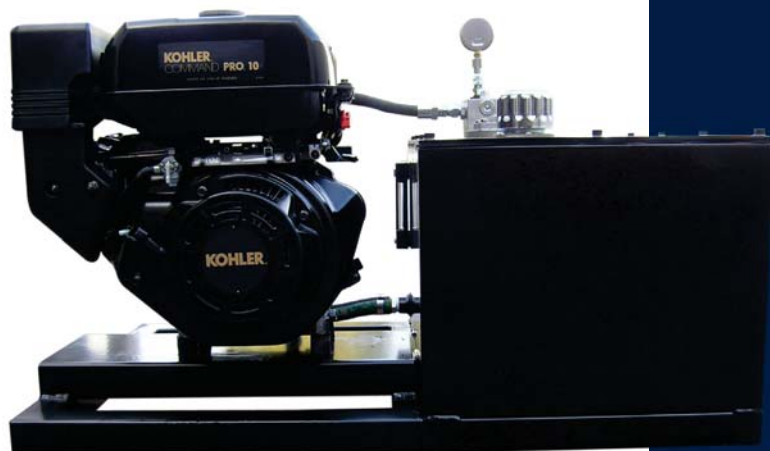


Other Build Configurations available

- Tank top horizontal mount
- Tank and skid "L" Type
- Power packs can be supplied with spill trays or full bund tank requirements

Diesel/ Petrol Units

- Built to your specifications
- Air cooled diesel engines (standard) up to 42 HP
- Water cooled diesel engines available
- Electric/ Key start fitted as standard across all Diesel ATO's
- Lifting frames & forklift slots available



Air Motor Drives

- Piston Air Motors - 4.7kW, 2.4 HP to 23kW, 32 HP
- Vane Air Motors 0.44kW to 9.5 kW
- Intrinsically safe motors available
- Ideal for application where there is no electricity or air is the preferred power source
- Can be supplied with FRL Units
- Units available with no aluminium content - suitable for underground coal mining applications



ATO COMPONENTS



Electrical Control Boxes

- All control boxes manufactured in Australia to AS3000 Standards
- Control boxes can be fitted with local control buttons, with up to 6 functions
- Stop/ Start Emergency Stop
- Control boxes can be fitted with pendant controls with up to 6 operational functions
- Pendants meet industry standard - 22mm button control



Manifolds & Subplates

- CETOP 2 Subplates
- CETOP 3 & CETOP 5 Subplates and Manifolds
- Built in Reliefs
- Electrical cartridge valve unloading sections bolt onto CETOP manifold
- Tank top-mount manifold adaptor plates
- High/ Low manifolds for dual pump operation available in CETOP 3 and CETOP 5



In-line Pressure Filtration

- High pressure - up to 350 Bar
- High collapse element
- Bypass Valve - Fitted or removed
- Blocking indicator - Manual/ Visual or Electrical



Coolers

- Air Blast
- Shell & Tube
- Plate

HYDRAULIC VALVES

CETOP VALVES

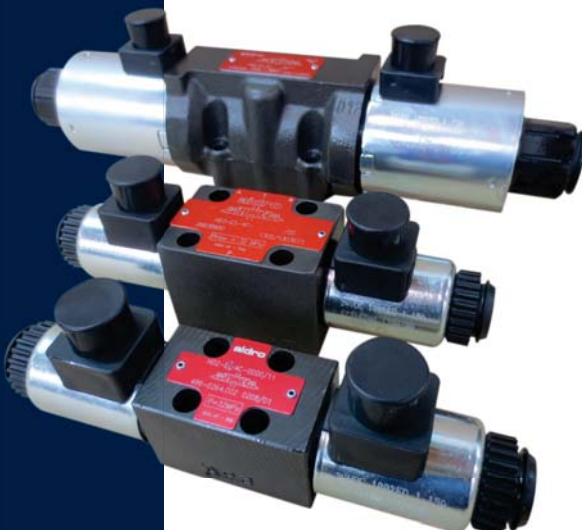
- CETOP 2
- CETOP 3
- CETOP 5

Standard Features

- Interchangeable Voltage Coils
- Manual Overrides
- Flows & Pressures up to 120 L/m and 320 Bar

Options Available

- CETOP 3 Proportional Valves and Amplifier/ Driver Cards
- Explosive Proof ATEX Coils to Exd 11C T5 standard
- LED hirshmann indicator plugs can be fitted to valves
- Valves available with CETOP modular stackable sections
 - Flow Controls
 - Pilot Checks
 - Cross Line Reliefs



VARIABLE SPEED DRIVES (VSD)

Amongst the most successful means for controlling electrical energy use and minimising utility costs is the use of variable-speed drives (VSD's). Incorporating VSD's into applications such as fans, pumps, and cooling towers can reduce energy use up to 50% at partial loads by matching motor speed to the changing load and system requirements.

Advances in VSD technology are putting even more power in the hands of maintenance and engineering managers, who are taking a closer look at the life-cycle costs and potential benefits of VSD applications for their facilities.

- All PT Industrial's three (3) phase power units can be supplied with an Energy Saving VSD Controller.
- VSD units can be supplied pre-configured to customer specifications or can be supplied for customers to create their own unique control criteria.

BENEFITS OF USING VSD DRIVES

- Soft start and stop of the motor and pump assembly
- Reduced maintenance costs due to controlled start speed, thereby increasing longevity of bearings and motor.
- Flow Control Valve is not required in most setups.
- Electrical energy costs are reduced when full loads/speeds are not required.
- Controlled starting current lowers the motor inrush current at start (typically 3-5 times run current).



HIGH PRESSURE PUMPS



PRESSURES TO 20 000 PSI (1380 BAR):

Dynex pumps operate with exceptional reliability at high pressures. Positive seating check valves provide better wear and higher efficiency. The compact design has a high horsepower-to-weight ratio, to handle higher loads than other pump designs. This makes checkball pumps ideal for use on high-pressure torque tools where higher speed or more power is required.

MULTIPLE FUNCTION CIRCUITS SIMPLIFIED:

The output from each piston in a Dynex pump can be isolated from the other pistons. This allows one multiple-outlet pump to replace as many as ten pumps. Flow from each outlet can operate at different pressures without affecting the flow or pressure from the other outlets. Piston outputs can be combined to supply different displacements. In circuits requiring synchronized movement, flow accuracy is greater than flow dividers.

COMPATIBILITY WITH A WIDE RANGE OF FLUIDS:

Dynex pumps provide reliable operation with extended life on R & D and production test stands. Pressure capability to 20 000 psi (1380 bar) and compatibility with various water-based, phosphate ester and MIL-SPEC fluids makes these pumps ideal for testing components used on commercial and military aircraft.

BI-DIRECTIONAL ROTATION:

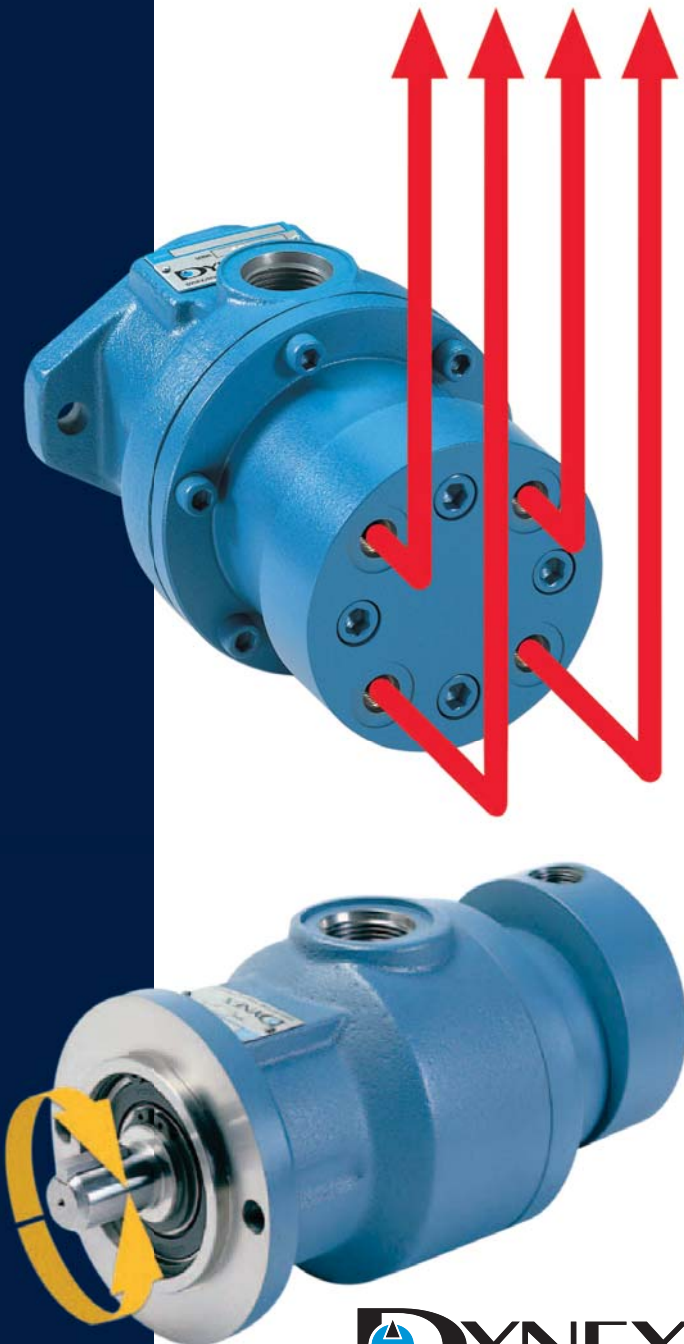
Dynex fixed displacement pumps provide constant flow direction regardless of drive shaft rotation. This prevents damage to hydraulic equipment when the pump is installed incorrectly or when electric motors are not wired properly. Only one model is required on both ends of double-ended motors or when coupled to reversible engines.

CONTAMINATION TOLERANT:

Dynex pumps operate with long life in extreme environments. The pumps resist failure due to contamination, with a large flushing path into pistons and through durable outlet check valves. They are ideal for conditions where dust and dirt cannot be totally removed by filtration. Applications include steel mills and metal processing, rock crushing equipment and solar powered systems that operate in remote locations around the world.

RESISTANT TO CAVITATION DAMAGE:

Other pump designs, as shown above, can be damaged by cavitation if air inadvertently enters the system. If the oil level falls below the intake pipe or if an inlet valve is closed at startup, other pump designs will quickly fail. Decompression shock in Dynex pumps is reduced, because the outlet checks do not unseat until pumped fluid reaches load pressure.



HYDRAULIC & PNEUMATIC TESTING EQUIPMENT

Test Benches manufactured by our GLOBE Test Equipment B.V Supplier.

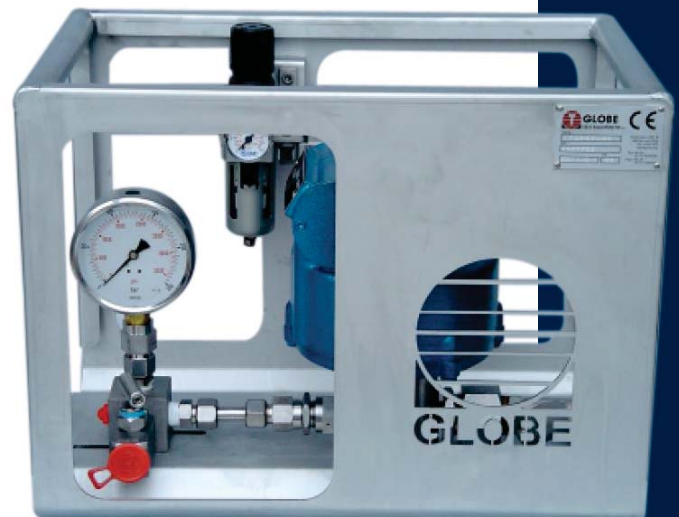
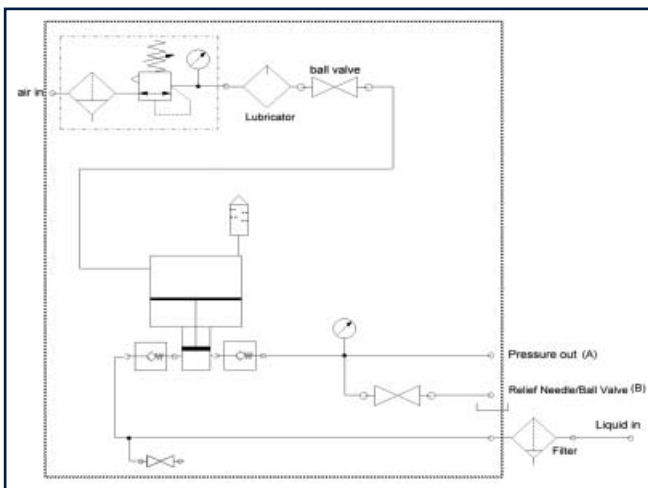
- Pressure and bursting pressure test benches
- Pulse and durability test benches
- Leak testing units
- Functional test benches
- High pressure generating systems
- Pressure gauge adjusting systems
- Autofrettage systems
- Mandrel extraction machines for hoses
- Air bag filling and controlling systems



Globe Air Driven Test Pumps incorporated in the Globe Test System are Piston type pumps. These pumps provide a number of advantages:

- Simply and easy to operate just by using a ball valve and pressure regulator.
- Intrinsically safe for explosion proof environments, all Globe pumps are certified according The European Explosion Directive Atex II cat 2 G&D T4.
- Proportional control in flow and pressure, over the complete characteristic of the pump.
- Robust and compact
- Portable and reliable

Compact & Portable Systems - Pressure to 750 Bar.



Applications:

- Pressure Testing Of Hoses
- Pressure Testing Of Valves
- Petrochemical Installation Testing (On site)
- Testing Of Pressure Vessels / Tanks
- Units can be supplied as standard or modified to include items such as a Chart Recorder or Pressure Transducers / Transmitters

ORDER SPECIFICATION SHEET

Duty Cycle	Continuous	Intermittent	Use Once														
Working Pressure Bar				<table border="1" style="width: 100%; border-collapse: collapse;"> <tr> <td style="width: 50%;">Customer</td> <td></td> </tr> <tr> <td>Name</td> <td></td> </tr> <tr> <td>Signature</td> <td></td> </tr> </table>								Customer		Name		Signature	
Customer																	
Name																	
Signature																	
Pressure Relief Valve	YES	NO															
Relief Valve Setting																	
Flow- LPM																	
Piston Pump	Vane Pump				Gear Pump												
Gear Pump Displacements Available	GP1	1.1cc	1.3cc	1.6cc	2.1cc	2.7cc	3.2cc	3.7cc	4.2cc	4.8cc	5.8cc	8.0cc					
	GP2	4cc	6cc	8cc	10cc	12cc	14cc	16cc	20cc	25cc							
	GP3	20cc	26cc	33cc	39cc	46cc	55cc	63cc									
Motor	AC	240volt		415volt		AIR Motor (Vane / Piston)			DC		ENGINE						
		2P	4P	6P	8P				12V	24V	PETROL	DIESEL					
Tank Capacity-LTR	40	50	75	130	200	300	400	Specify									
Return Filtration	Yes	No	Micron		5um	10um	25um	Clogging Indicator		YES	NO						
Pressure Gauge	Yes	No	Test Point			No	Yes										
Pressure Filtration	Yes	No	Micron		5um	10um	25um	Clogging Indicator		YES	NO						
Manifold	CT3	P & T with Relief				Series											
	CT5	Bulkhead Only				Parallel											
Directional Control Valves		A51				1C											
		4ML			Other (Please Specify)												
		1LL															
		4C															
		0C															
		3C															
Control Voltage	12VDC	24VDC	24VAC	115VAC	240VAC												
Options	Pendant		Other Options														
	Wiring Loom																
	Power Lead																

GIVE US A CALL TO **DISCUSS YOUR OPTIONS...**

ALSO AVAILABLE FROM **PT INDUSTRIAL**

P: 03 9562 8800

E: sales@pthydraulics.com.au



POWER TEAM®



- 10,000 PSI Hydraulic Tooling & Equipment
- Hydraulic Cylinders
- Hydraulic Pumps
- Hydraulic Tools & Accessories
- Hydraulic Presses & Pullers

PROTORC

WWW.PROTORC.COM.AU



- Square Drive Hydraulic Torque Wrench
- Low Clearance Hydraulic Torque Wrenches
- Full range of torque wrench accessories
- Hydraulic Torque Wrench Pumps & twin-line hoses

DYNEX

High Pressure Hydraulics



- Water Glycol Pumps
- High Pressure Piston Pumps (20,000 PSI)
- Stainless Steel piston pumps
- Split Flow Pumps
- High Pressure DCV's

YOULI®



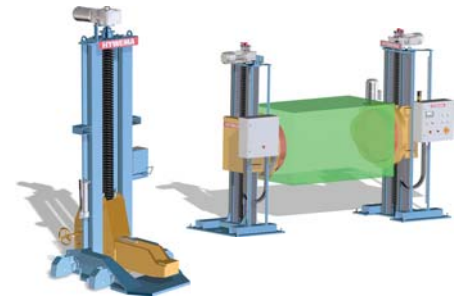
- Monoblock Directional Control Valves
- Sectional Directional Control Valves
- Proportional Valves

vetter



- Pneumatic Lifting Bags
- Pipe & Leak Sealing Equipment
- HAZMAT & Decontamination Equipment
- Pneumatic Tents

HYWEMA®



- Synchronised mobile lifting equipment
- Lifting and rotating equipment
- Scissor Lifts and Tilting Tables

STONE®



- Hydraulic Power Units
- AC & DC Power Units
- Pendants & Wiring Looms
- Assemble To Order (ATO) power units

GLOBE®



- Radial Piston Air Motors
- Vane Air Motors
- Compact Piston Air Motors
- Air Driven Liquid Test Units

serv-Clip®

TUBE MEASURING CONNECTION



- Pipe Measuring Points & Sensors
- Flow Rate Sensors
- Leakage Sensors
- Mobile Measurement Kits